

FOR LEASE
1059 10th Avenue
San Diego, CA



Office Space for Lease

EMMETT CAHILL
619.243.8470
ecahill@qfcre.com
BRE #02033604

PETER WRIGHT
619.318.2139
pwright@qfcre.com
BRE #01846272

The information contained here has been obtained from sources considered to be reliable, but no guarantee of its accuracy is made by this company. In addition, no representation is made respecting zoning, condition of title, dimensions or any matters of a legal or environmental nature. Such matters should be referred to legal counsel for determination. Terms and conditions are subject to change without prior notice. Subject to errors and omissions.



SPACE AVAILABLE

200 - 1,974 RSF

Single private office (s) or entire building available

LEASE RATE

\$3.05 PSF or negotiable per office

PROPERTY HIGHLIGHTS

- Reception area
- Conference room
- Five (5) private offices
- Beautiful back patio
- Front courtyard
- Private restrooms
- Kitchenette

Charming two-story office building featuring ground floor reception area, backyard patio, large storage, back patio area and front yard courtyard. Building features central air, 1 restroom on second floor and half-bath & kitchen on first floor. Historical character with original wood and stained glass windows.

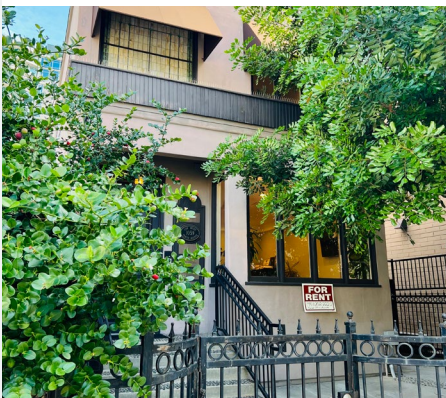
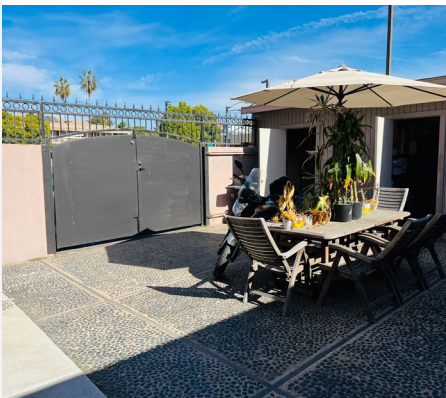
EMMETT CAHILL
619.243.8470
ecahill@qfcre.com
BRE #02033604

PETER WRIGHT
619.318.2139
pwright@qfcre.com
BRE #01846272

The information contained here has been obtained from sources considered to be reliable, but no guarantee of its accuracy is made by this company. In addition, no representation is made respecting zoning, condition of title, dimensions or any matters of a legal or environmental nature. Such matters should be referred to legal counsel for determination. Terms and conditions are subject to change without prior notice. Subject to errors and omissions.



PHOTOS

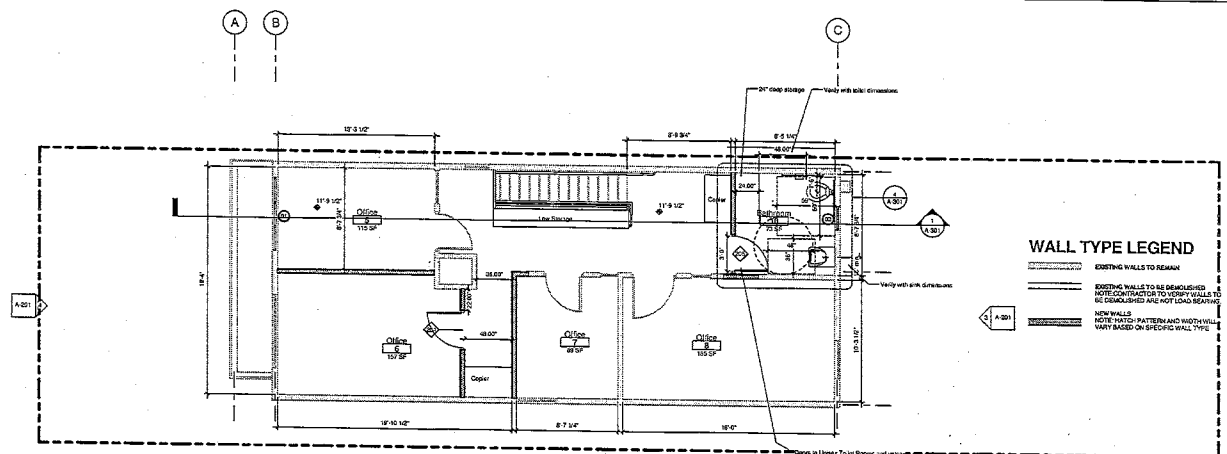
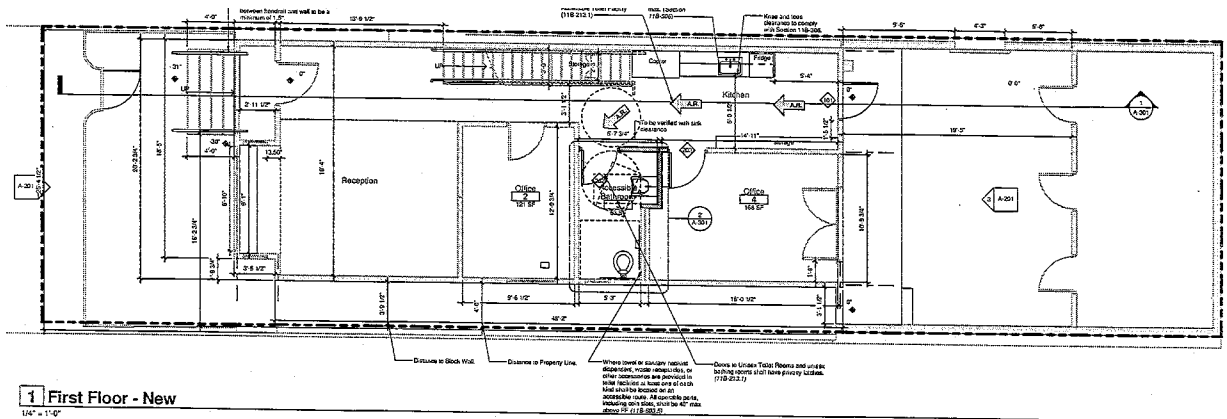


EMMETT CAHILL
619.243.8470
ecahill@qfcre.com
BRE #02033604

PETER WRIGHT
619.318.2139
pwright@qfcre.com
BRE #01846272

The information contained here has been obtained from sources considered to be reliable, but no guarantee of its accuracy is made by this company. In addition, no representation is made respecting zoning, condition of title, dimensions or any matters of a legal or environmental nature. Such matters should be referred to legal counsel for determination. Terms and conditions are subject to change without prior notice. Subject to errors and omissions.

FLOOR PLANS

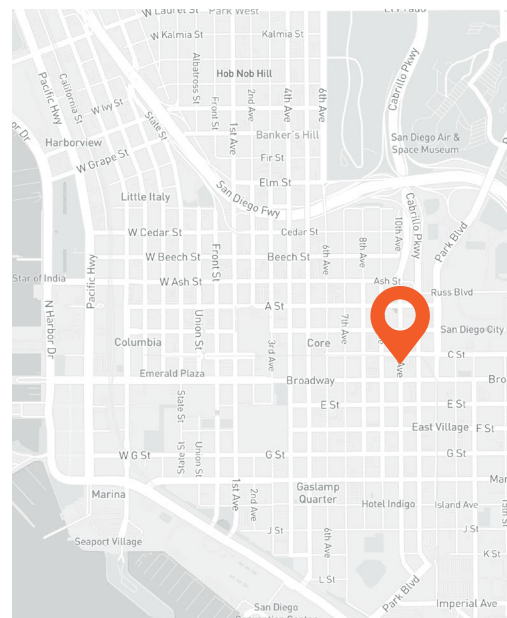
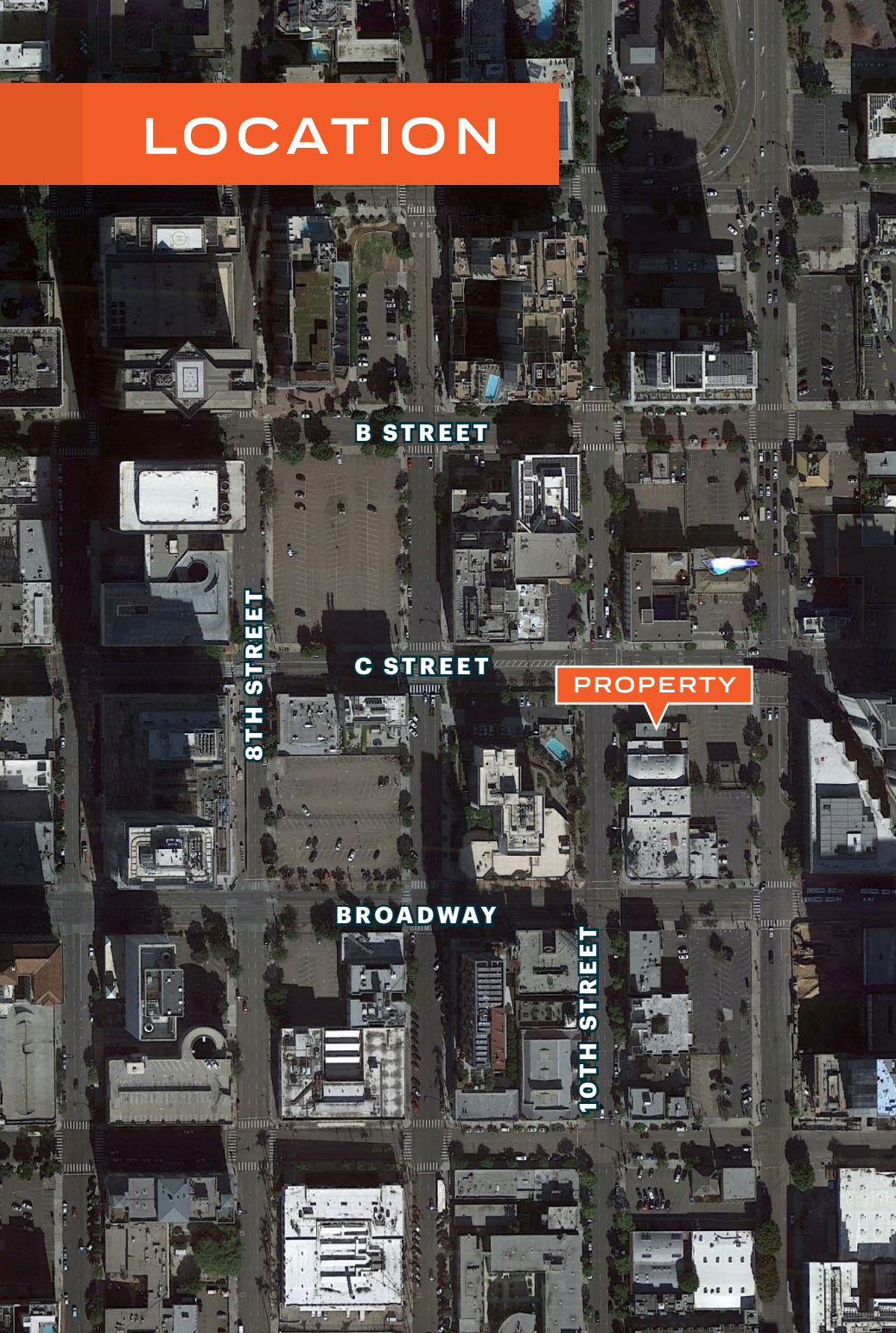


EMMETT CAHILL
619.243.8470
ecahill@qfcre.com
BRE #02033604

PETER WRIGHT
619.318.2139
pwright@qfcre.com
BRE #01846272

The information contained here has been obtained from sources considered to be reliable, but no guarantee of its accuracy is made by this company. In addition, no representation is made respecting zoning, condition of title, dimensions or any matters of a legal or environmental nature. Such matters should be referred to legal counsel for determination. Terms and conditions are subject to change without prior notice. Subject to errors and omissions.

LOCATION



| | |
|-----------------|-----------------|
| Balboa Park | 4 Minute Drive |
| Petco Park | 5 Minute Drive |
| Seaport Village | 7 Minute Drive |
| Airport | 8 Minute Drive |
| Mission Valley | 10 Minute Drive |
| Coronado | 10 Minute Drive |
| La Jolla - UTC | 20 Minute Drive |

511,470
2021 Population

29,318
Businesses

12,180
Traffic Counts

EMMETT CAHILL
619.243.8470
ecahill@qfcre.com
BRE #02033604

PETER WRIGHT
619.318.2139
pwright@qfcre.com
BRE #01846272

The information contained here has been obtained from sources considered to be reliable, but no guarantee of its accuracy is made by this company. In addition, no representation is made respecting zoning, condition of title, dimensions or any matters of a legal or environmental nature. Such matters should be referred to legal counsel for determination. Terms and conditions are subject to change without prior notice. Subject to errors and omissions.

FOR LEASE

1059 10th Avenue
San Diego, CA



Contact Information

QFC REAL ESTATE

1495 Pacific Highway, Suite 450, San Diego, CA 92101
619.243.8454 • qfcre.com

EMMETT CAHILL

619.243.8470
ecahill@qfcre.com
BRE #02033604

PETER WRIGHT

619.318.2139
pwright@qfcre.com
BRE #01846272

The information contained here has been obtained from sources considered to be reliable, but no guarantee of its accuracy is made by this company. In addition, no representation is made respecting zoning, condition of title, dimensions or any matters of a legal or environmental nature. Such matters should be referred to legal counsel for determination. Terms and conditions are subject to change without prior notice. Subject to errors and omissions.