

FOR LEASE

937 E Street
San Diego, California 92101



East Village Retail Space **For Lease**

EMMETT CAHILL
619.243.8470
ecahill@qfcre.com
BRE #02033604

PETER WRIGHT
619.243.8450
pwright@qfcre.com
BRE #01846272

The information contained here has been obtained from sources considered to be reliable, but no guarantee of its accuracy is made by this company. In addition, no representation is made respecting zoning, condition of title, dimensions or any matters of a legal or environmental nature. Such matters should be referred to legal counsel for determination. Terms and conditions are subject to change without prior notice. Subject to errors and omissions.



SPACE AVAILABLE

660 SF Ground Floor Retail

LEASE RATES

\$2.75 PSF + NNN (\$0.38)

PROPERTY HIGHLIGHTS

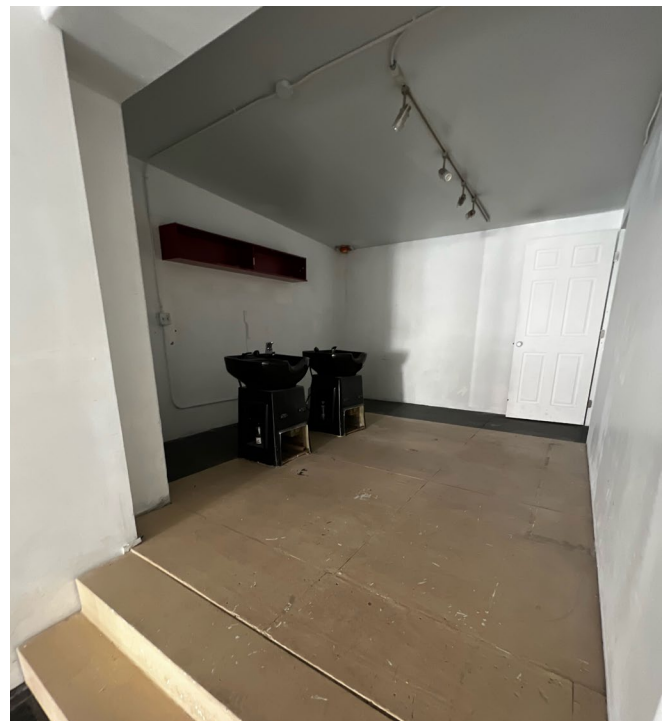
- Open layout with tile flooring
- Great natural light
- 1 private restroom
- High traffic count
- Prime East Village



EMMETT CAHILL
619.243.8470
ecahill@qfcre.com
BRE #02033604

PETER WRIGHT
619.243.8450
pwright@qfcre.com
BRE #01846272

The information contained here has been obtained from sources considered to be reliable, but no guarantee of its accuracy is made by this company. In addition, no representation is made respecting zoning, condition of title, dimensions or any matters of a legal or environmental nature. Such matters should be referred to legal counsel for determination. Terms and conditions are subject to change without prior notice. Subject to errors and omissions.



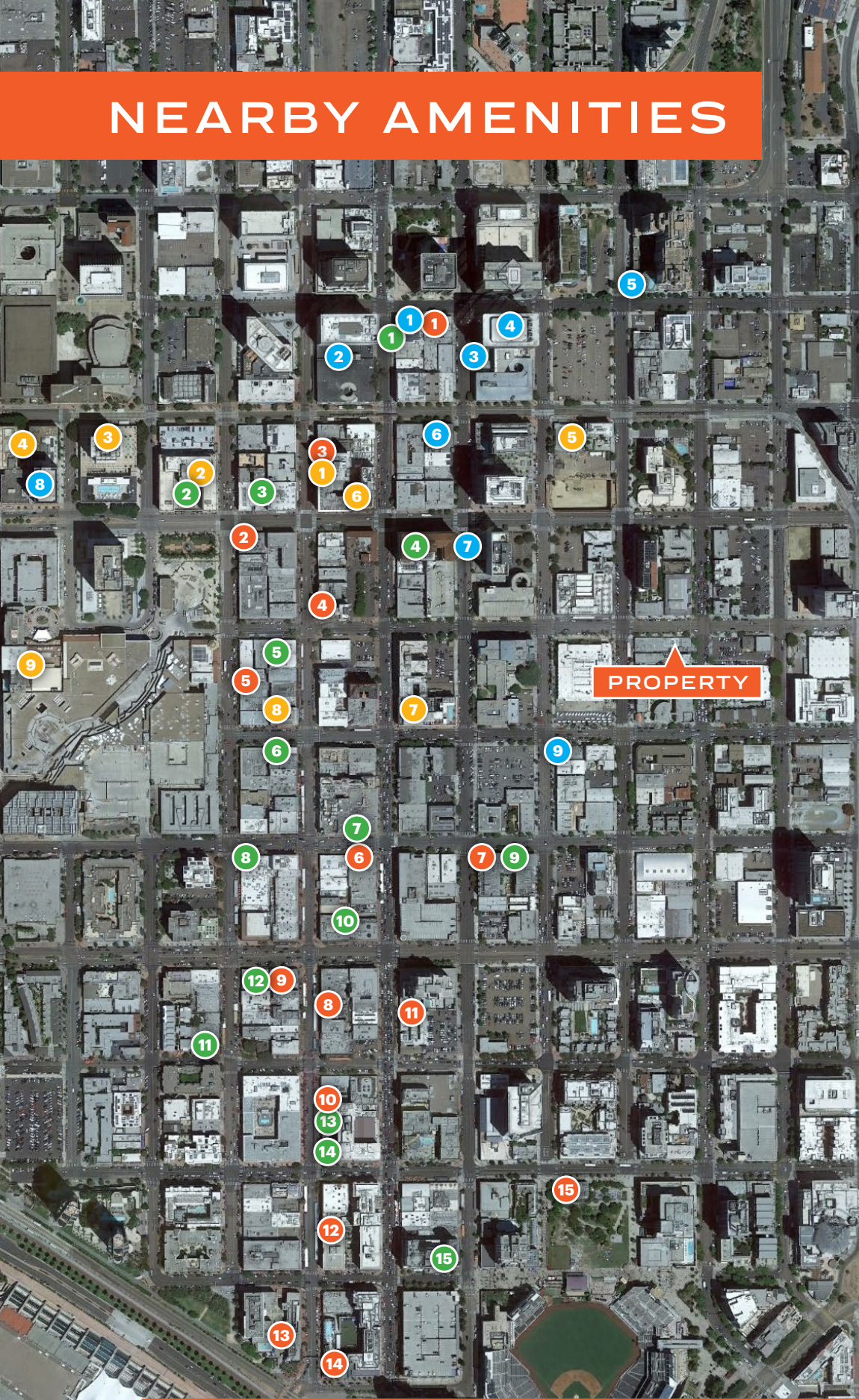
PHOTOS

EMMETT CAHILL
619.243.8470
ecahill@qfcre.com
BRE #02033604

PETER WRIGHT
619.243.8450
pwright@qfcre.com
BRE #01846272

The information contained here has been obtained from sources considered to be reliable, but no guarantee of its accuracy is made by this company. In addition, no representation is made respecting zoning, condition of title, dimensions or any matters of a legal or environmental nature. Such matters should be referred to legal counsel for determination. Terms and conditions are subject to change without prior notice. Subject to errors and omissions.

NEARBY AMENITIES



RESTAURANTS

1. Donut Bar
2. Gaslamp Fish House
3. Curadero
4. Melting Pot
5. Bandar Restaurant
6. Fogo de Chao
7. Breakfast Republic
8. Rustic Root
9. El Chingon
10. Lionfish
11. The Nolen
12. Cafe Sevilla
13. Lou & Mickey's
14. Nobu
15. Social Tap

HOTELS

1. Kimpton Hotel
2. The US Grant
3. The Westgate Hotel
4. The Bristol Hotel
5. Hotel Churchill
6. Courtyard Marriott
7. Andaz San Diego
8. The Keating Hotel
9. The Westin

BARS & BREWPUBS

1. Stout Public House
2. Rendezvous
3. Phantom Lounge
4. Parq
5. Gaslamp Tavern
6. Atomic
7. 5th & Sky
8. Tin Roof
9. Noble Experiment
10. Side Bar
11. Fluxx
12. Prohibition
13. The Pool House
14. Fifth and Rose
15. Altitude

COFFEE

1. Starbucks
2. 401 Brew Street
3. Coffee N' Talk
4. 7 Cafe
5. Little Owl Coffee
6. Organo Gold
7. The Bean Box
8. Blue Bottle Coffee
9. Tired Eyes Coffee

EMMETT CAHILL

619.243.8470

ecahill@qfcre.com

BRE #02033604

PETER WRIGHT

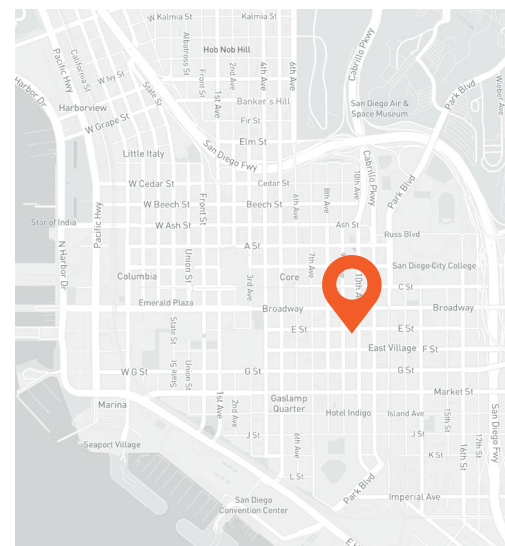
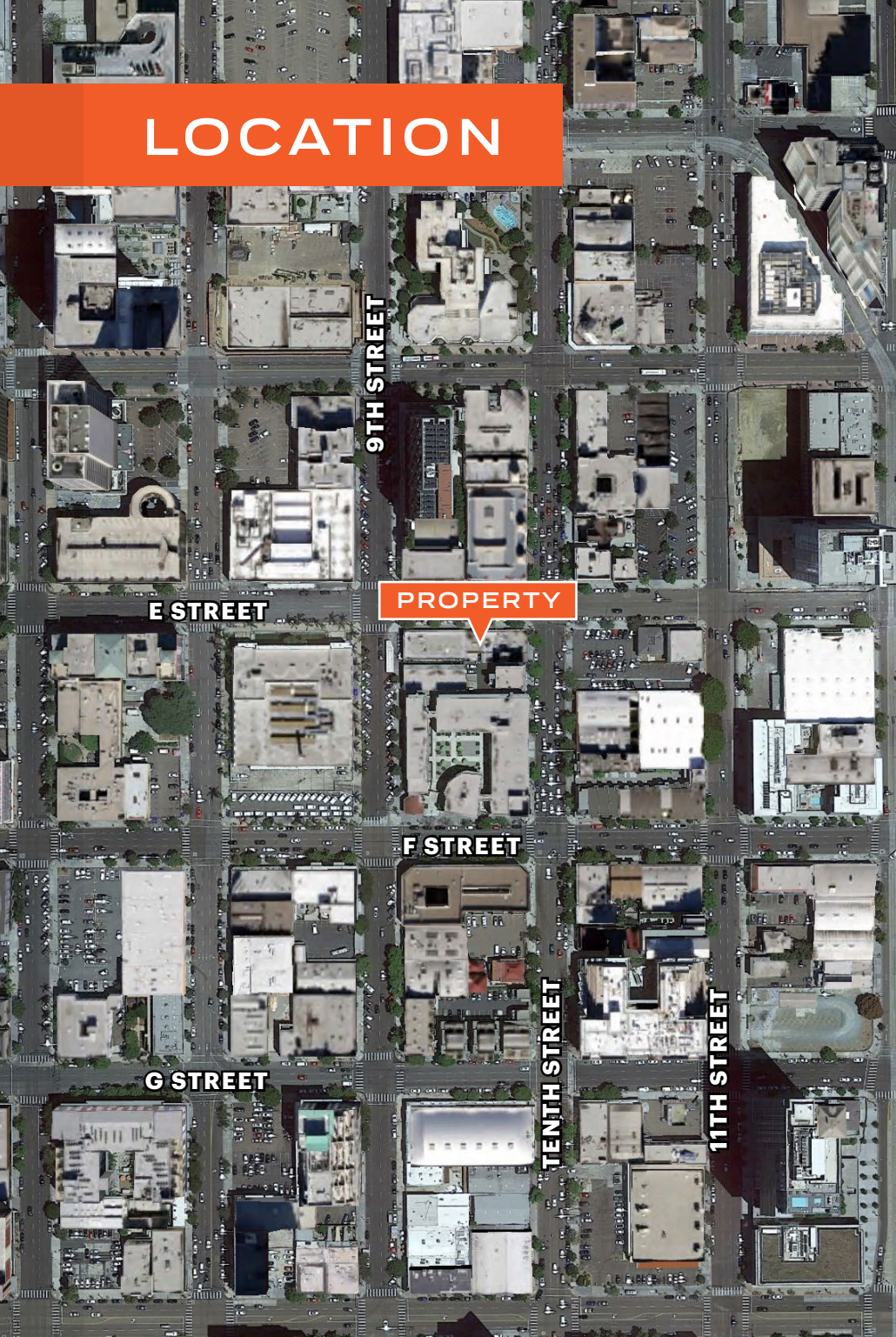
619.243.8450

pwright@qfcre.com

BRE #01846272

The information contained here has been obtained from sources considered to be reliable, but no guarantee of its accuracy is made by this company. In addition, no representation is made respecting zoning, condition of title, dimensions or any matters of a legal or environmental nature. Such matters should be referred to legal counsel for determination. Terms and conditions are subject to change without prior notice. Subject to errors and omissions.

LOCATION



More than 700 businesses are located in the thriving enclave of **East Village** with a dedicated business association (EVA) to promote neighborhood businesses and establish the community as San Diego's livable urban village. EVA Vision Statement: East Village will be recognized as San Diego's vibrant, diverse, urban community where residents and the entrepreneurial spirit thrive a distinct mix of arts, culture, education, and entertainment.

6,994
residential units
within four blocks

1.7M
SF of office
within four blocks

910
hotel rooms
within four blocks

EMMETT CAHILL
619.243.8470
ecahill@qfcre.com
BRE #02033604

PETER WRIGHT
619.243.8450
pwright@qfcre.com
BRE #01846272

The information contained here has been obtained from sources considered to be reliable, but no guarantee of its accuracy is made by this company. In addition, no representation is made respecting zoning, condition of title, dimensions or any matters of a legal or environmental nature. Such matters should be referred to legal counsel for determination. Terms and conditions are subject to change without prior notice. Subject to errors and omissions.

FOR LEASE

937 E Street

San Diego, California 92101



Contact Information

QFC REAL ESTATE

1495 Pacific Highway, Suite 450
San Diego, CA 92101
619.243.8454 • qfcre.com

EMMETT CAHILL

619.243.8470
ecahill@qfcre.com
BRE #02033604

PETER WRIGHT

619.243.8450
pwright@qfcre.com
BRE #01846272

The information contained here has been obtained from sources considered to be reliable, but no guarantee of its accuracy is made by this company. In addition, no representation is made respecting zoning, condition of title, dimensions or any matters of a legal or environmental nature. Such matters should be referred to legal counsel for determination. Terms and conditions are subject to change without prior notice. Subject to errors and omissions.