

EL CAJON OFFICES FOR LEASE

671-681 S. MOLLISON AVE | EL CAJON | CA | 92020



MICHAEL WOKULUK

LIC #01972342

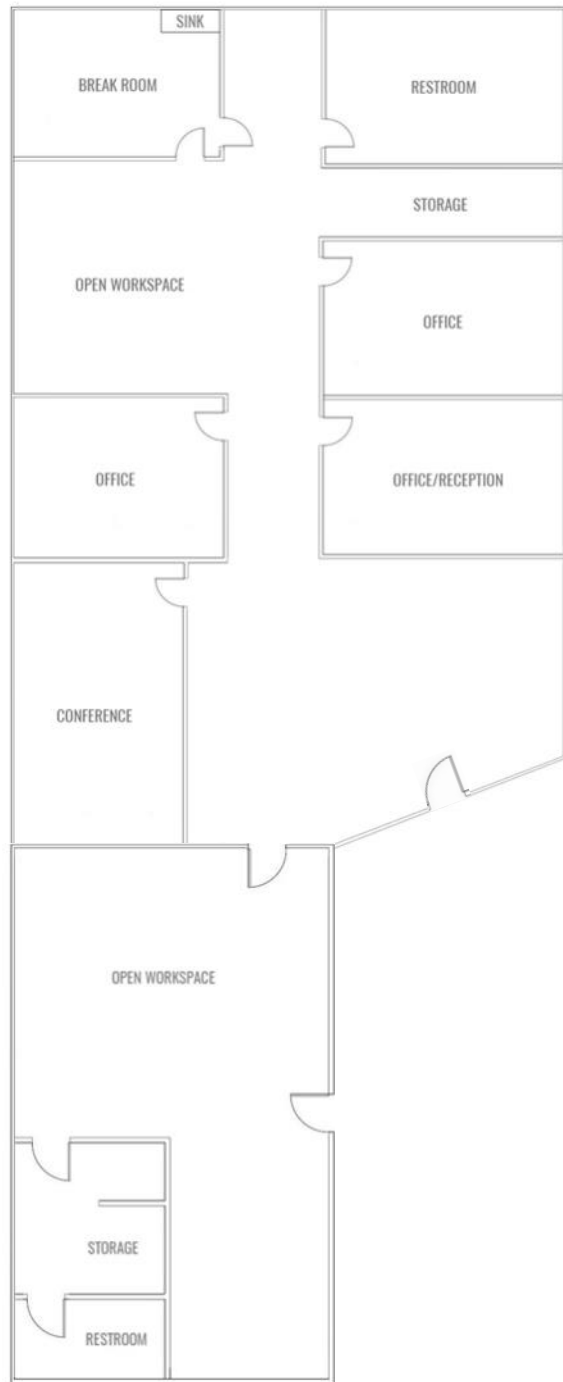
619-243-8459

mwokuluk@qfcre.com

1495 Pacific Highway, Suite 450, San Diego, CA 92101 | (619) 243—8454 | www.qfcre.com

The information contained herein has been obtained from sources considered to be reliable, but no guarantee of its accuracy is made by this company. In addition, no representation is made respecting zoning, condition of title, dimensions, or any matters of a legal or environmental nature. Such matters should be referred to legal counsel for determination. Terms and conditions are subject to change without prior notice. Subject to errors and omissions.

671 S. MOLLISON AVE—SUITE D



SUITE D—DETAILS

- ◆ Approximately ±2,250 SF of ground floor retail/office space.
- ◆ Included are three (3) private offices, a glass conference room, kitchenette, two (2) large open workspaces, two (2) storage closets, and two (2) restrooms
- ◆ Beautiful turn-key suite with tile flooring and LED lighting.
- ◆ Three (3) reserved parking space included
- ◆ Available with 60 days notice

LEASE RATE:

- ◆ \$1.65/SF + NNN



MICHAEL WOKULUK

LIC #01972342

619-243-8459

mwokuluk@qfcre.com

1495 Pacific Highway, Suite 450, San Diego, CA 92101 | (619) 243—8454 | www.qfcre.com

The information contained herein has been obtained from sources considered to be reliable, but no guarantee of its accuracy is made by this company. In addition, no representation is made respecting zoning, condition of title, dimensions, or any matters of a legal or environmental nature. Such matters should be referred to legal counsel for determination. Terms and conditions are subject to change without prior notice. Subject to errors and omissions.

681 S. MOLLISON AVE: SUITE D—PHOTOS



Entry/ Reception



Glass Conference Room



Hallway



Well Laid Out Office



MICHAEL WOKULUK
LIC #01972342
619-243-8459
mwokuluk@qfcre.com

1495 Pacific Highway, Suite 450, San Diego, CA 92101 | (619) 243—8454 | www.qfcre.com

The information contained herein has been obtained from sources considered to be reliable, but no guarantee of its accuracy is made by this company. In addition, no representation is made respecting zoning, condition of title, dimensions, or any matters of a legal or environmental nature. Such matters should be referred to legal counsel for determination. Terms and conditions are subject to change without prior notice. Subject to errors and omissions.

681 S. MOLLISON AVE: SUITE D—PHOTOS



Suite D



Open Work Space



Abundant Natural Light



Nicely Appointed



MICHAEL WOKULUK
LIC #01972342
619-243-8459
mwokuluk@qfcre.com

1495 Pacific Highway, Suite 450, San Diego, CA 92101 | (619) 243—8454 | www.qfcre.com

The information contained herein has been obtained from sources considered to be reliable, but no guarantee of its accuracy is made by this company. In addition, no representation is made respecting zoning, condition of title, dimensions, or any matters of a legal or environmental nature. Such matters should be referred to legal counsel for determination. Terms and conditions are subject to change without prior notice. Subject to errors and omissions.



671-681 S. MOLLISON AVE, EI CAJON, CA 92020



MICHAEL WOKULUK

LIC #01972342

619-243-8459

mwokuluk@qfcre.com

1495 Pacific Highway, Suite 450, San Diego, CA 92101 | (619) 243-8454 | www.qfcre.com

The information contained herein has been obtained from sources considered to be reliable, but no guarantee of its accuracy is made by this company. In addition, no representation is made respecting zoning, condition of title, dimensions, or any matters of a legal or environmental nature. Such matters should be referred to legal counsel for determination. Terms and conditions are subject to change without prior notice. Subject to errors and omissions.