

# 9,425 +/- RSF On Top Floor In Little Italy

444 W. Beech Street, San Diego, CA 92101

---

**Emmett Cahill**  
**BRE #02033604**  
619-243-8470  
ecahill@qfcre.com

---

**Steve Martini**  
**BRE #01330605**  
619-243-8451  
smartini@qfcre.com



**444 W Beech St, San Diego, CA 92101, USA**

The information contained herein has been obtained from sources considered to be reliable, but no guarantee of its accuracy is made by this company. In addition, no representation is made respecting zoning condition of title, dimensions, or any matters of a legal or environmental nature. Such matters should be referred to legal counsel for determination. Terms and conditions are subject to change without prior notice. Subject to errors and omissions.

# PROPERTY SUMMARY



## SUMMARY

Available Space +/- 9,425 Square Feet

## RATE

\$2.85 psf + Electric

## LOCATION HIGHLIGHTS

Heart of Little Italy

Walk Score of 90 out of 100 - Walkers Paradise

444 W. Beech Street Is a Three (3) Minute Walk From The Sycuan Green Line Little Italy Trolley Stop

Nearby Parks Include: Amici Park, Waterfront Park And American Plaza

Close Restaurants Include: Queenstown Public House, Lofty Coffee, Café Italia, Ironside, Craft & Commerce, Harbor, Shake Shack, Ballast Point, Stone Tasting Room And Many More

## PROPERTY HIGHLIGHTS

Top Floor Available Now

Open Floorplan

Twelve (12) Private Offices

Large 16-18 Person Conference Room

Kitchen

Server Room

Direct Elevator Entry Into Reception Area

Designated Restrooms

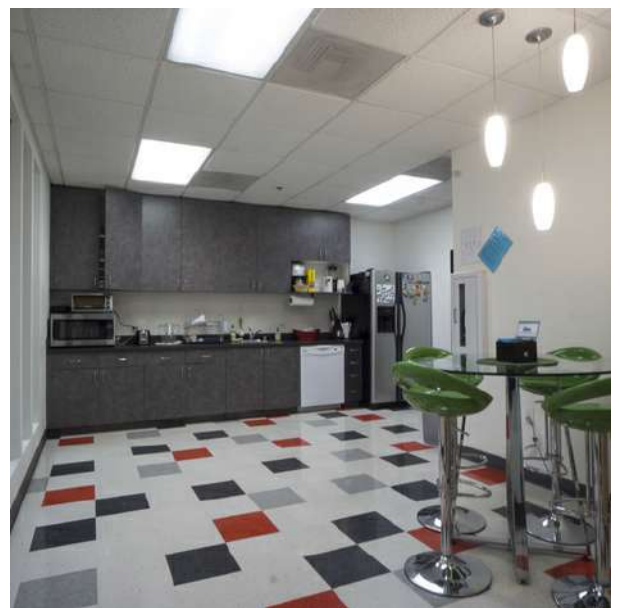
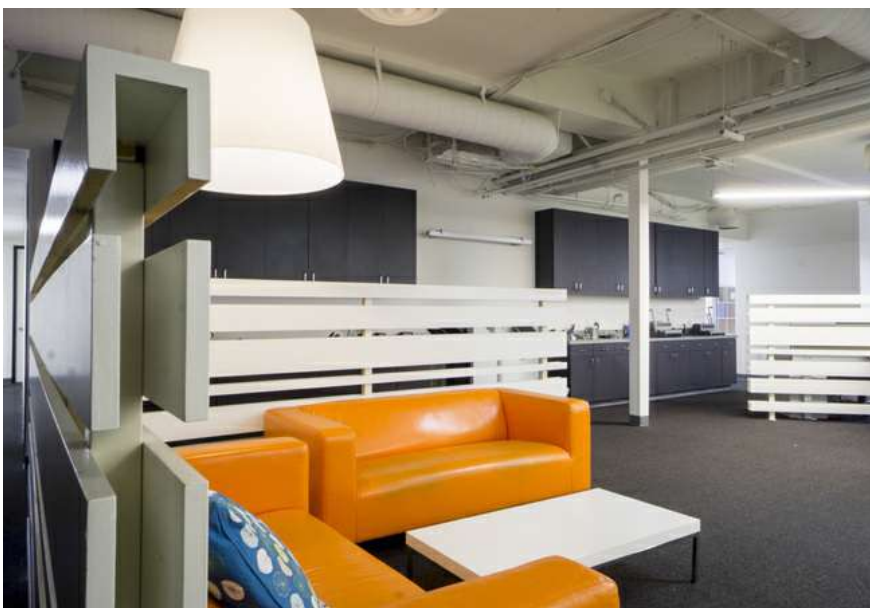
Onsite Gated Parking Available

Well Laid Out For Any Financial, Tech, Or Professional Firm

**444 W Beech St, San Diego, CA 92101, USA**

The information contained herein has been obtained from sources considered to be reliable, but no guarantee of its accuracy is made by this company. In addition, no representation is made respecting zoning condition of title, dimensions, or any matters of a legal or environmental nature. Such matters should be referred to legal counsel for determination. Terms and conditions are subject to change without prior notice. Subject to errors and omissions.

# PHOTOS



**444 W Beech St, San Diego, CA 92101, USA**

The information contained herein has been obtained from sources considered to be reliable, but no guarantee of its accuracy is made by this company. In addition, no representation is made respecting zoning condition of title, dimensions, or any matters of a legal or environmental nature. Such matters should be referred to legal counsel for determination. Terms and conditions are subject to change without prior notice. Subject to errors and omissions.

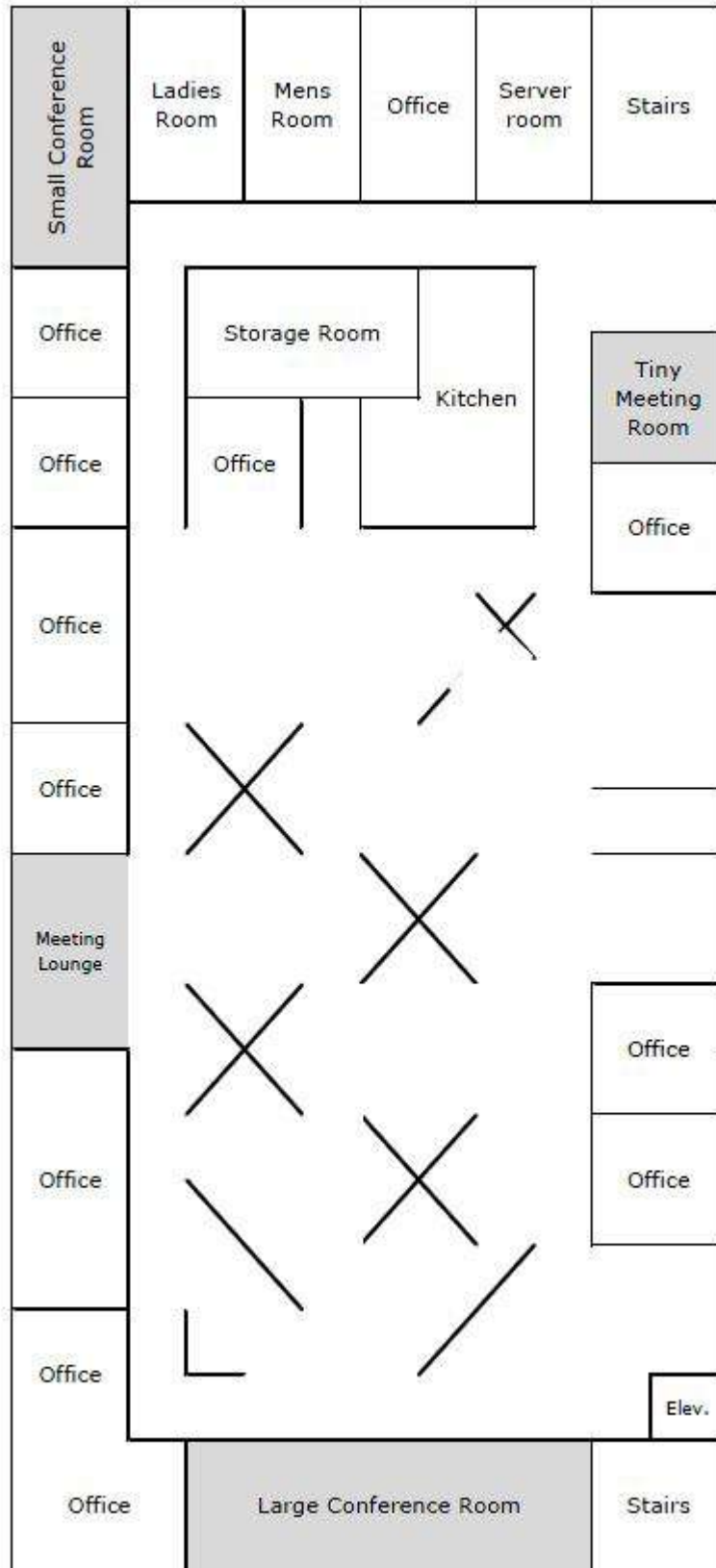
# PHOTOS



**444 W Beech St, San Diego, CA 92101, USA**

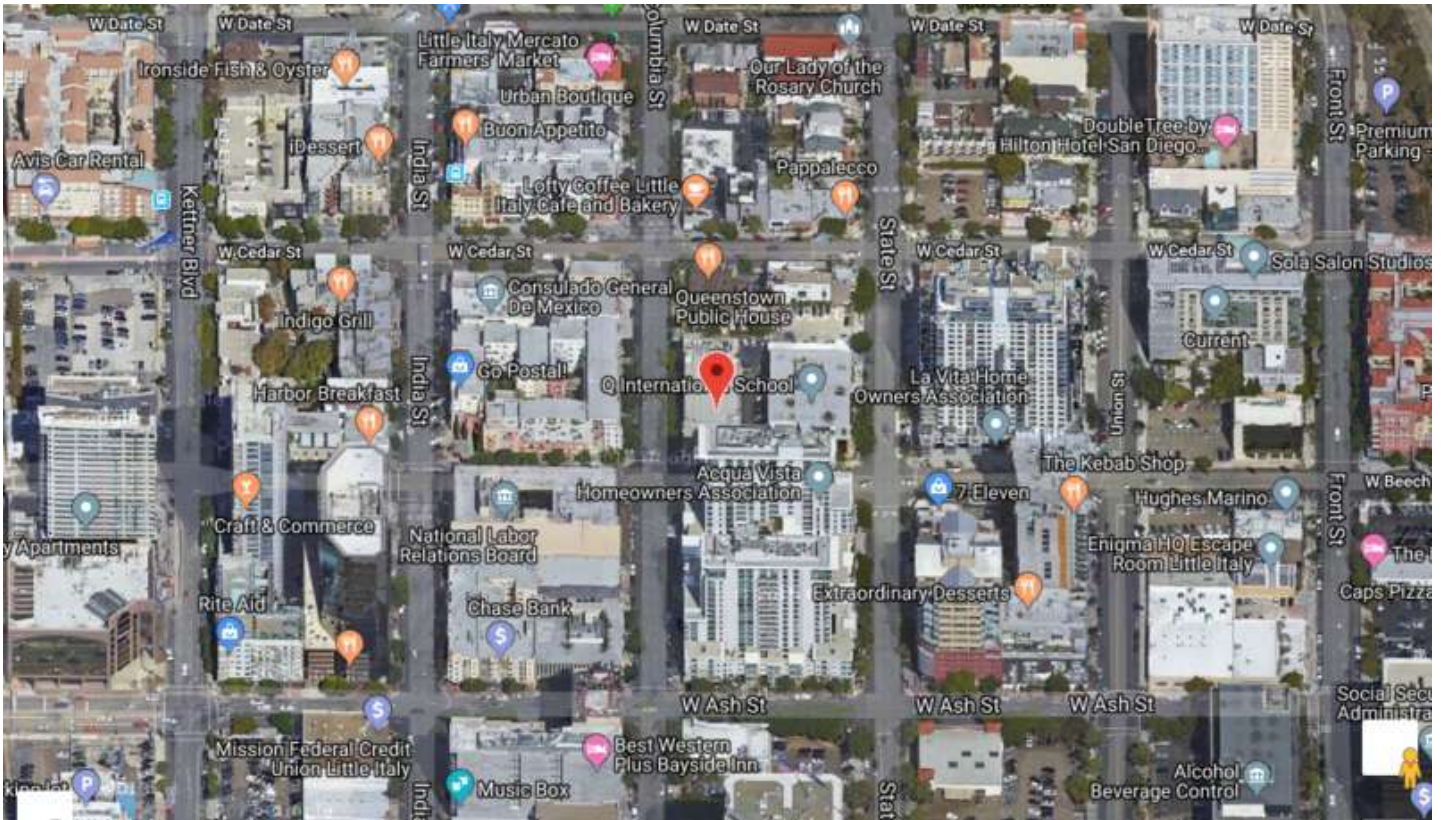
The information contained herein has been obtained from sources considered to be reliable, but no guarantee of its accuracy is made by this company. In addition, no representation is made respecting zoning condition of title, dimensions, or any matters of a legal or environmental nature. Such matters should be referred to legal counsel for determination. Terms and conditions are subject to change without prior notice. Subject to errors and omissions.

# LAYOUT



The information contained herein has been obtained from sources considered to be reliable, but no guarantee of its accuracy is made by this company. In addition, no representation is made respecting zoning condition of title, dimensions, or any matters of a legal or environmental nature. Such matters should be referred to legal counsel for determination. Terms and conditions are subject to change without prior notice. Subject to errors and omissions.

# LOCATION



The information contained herein has been obtained from sources considered to be reliable, but no guarantee of its accuracy is made by this company. In addition, no representation is made respecting zoning condition of title, dimensions, or any matters of a legal or environmental nature. Such matters should be referred to legal counsel for determination. Terms and conditions are subject to change without prior notice. Subject to errors and omissions.

**444 W Beech St, San Diego, CA 92101, USA**