

INDUSTRIAL BUILDING | FOR SALE

3101 HOOVER AVENUE | NATIONAL CITY | CA | 91950

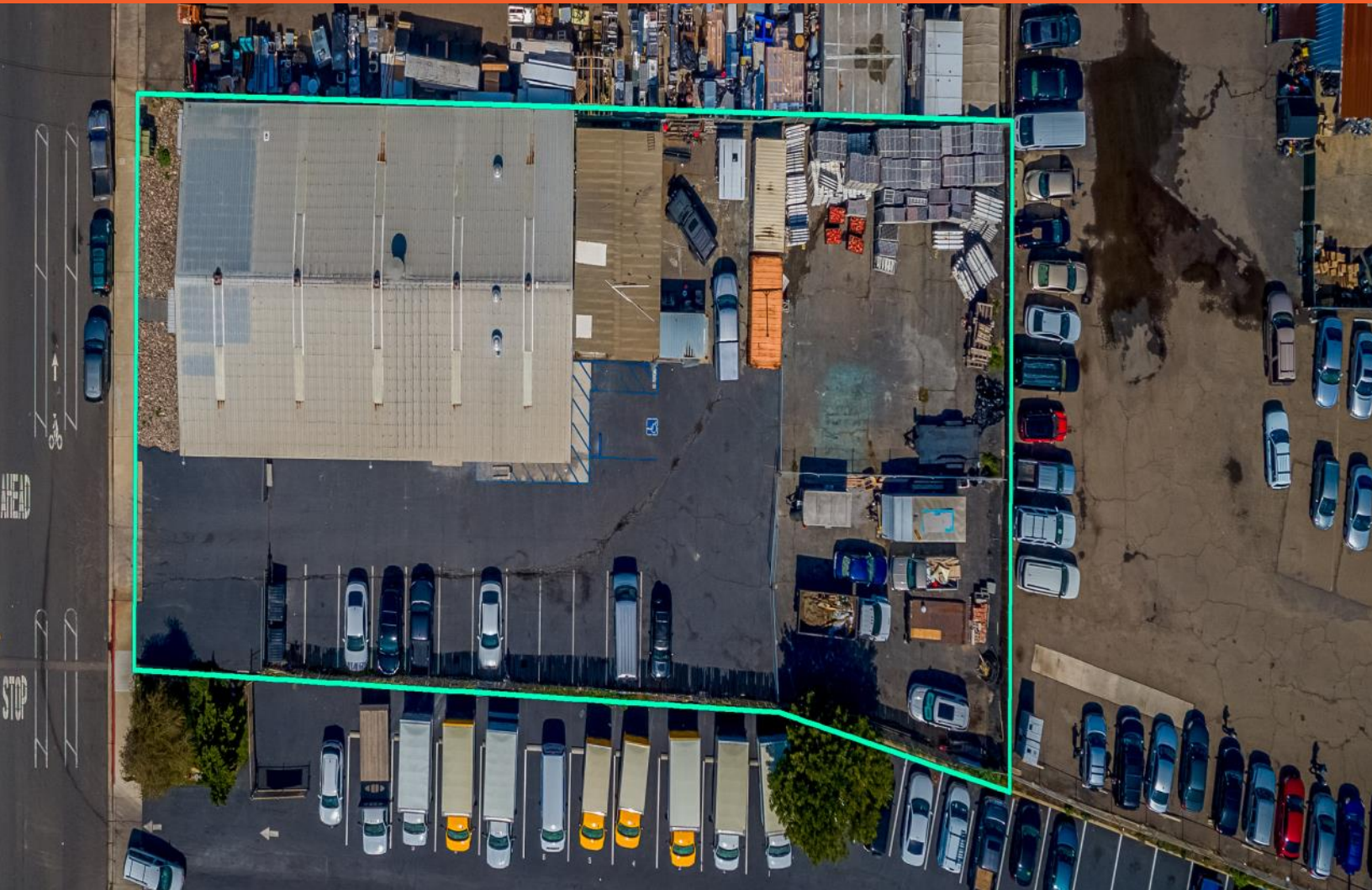


Peter Wright
Lic #01846272
619-243-8450
pwright@qfcre.com

1495 Pacific Highway, Suite 450, San Diego, CA 92101 | (619) 243—8454
www.qfcre.com

The information contained herein has been obtained from sources considered to be reliable, but no guarantee of its accuracy is made by this company. In addition, no representation is made respecting zoning, condition of title, dimensions, or any matters of a legal or environmental nature. Such matters should be referred to legal counsel for determination. Terms and conditions are subject to change without prior notice. Subject to errors and omissions.

PROPERTY HIGHLIGHTS



- ± 8,000 Warehouse
(+/-1,000 SF Office, rest Warehouse)
- ♦ ± .54 Acres
- ♦ Prime National City Location
- ♦ APN: 562-220-40
- ♦ Recent Capital Improvements
- ♦ Large Fenced Yard Area
- ♦ Easy Freeway Access
- ♦ Potential Sale Leaseback
- Built in 1973
- 22ft Ceilings, 3 Phase Power
- Permitted Mezzanine
- Light Industrial Zoning
- 4 Short Term Tenants in place
- Ideal for Owner/User

SALE PRICE: \$2,000,000.00



F.S.L. Inc.
RESTAURANT EQUIPMENT

310

