

# MISSION VALLEY FULL FLOOR FOR LEASE

2763 CAMINO DEL RIO SOUTH | SUITE 200 | SAN DIEGO | CA | 92108



Peter Wright  
Lic #01846272  
619-243-8450  
pwright@qfcre.com

Michael Wokuluk  
Lic #01972342  
619-243-8459  
mwokuluk@qfcre.com

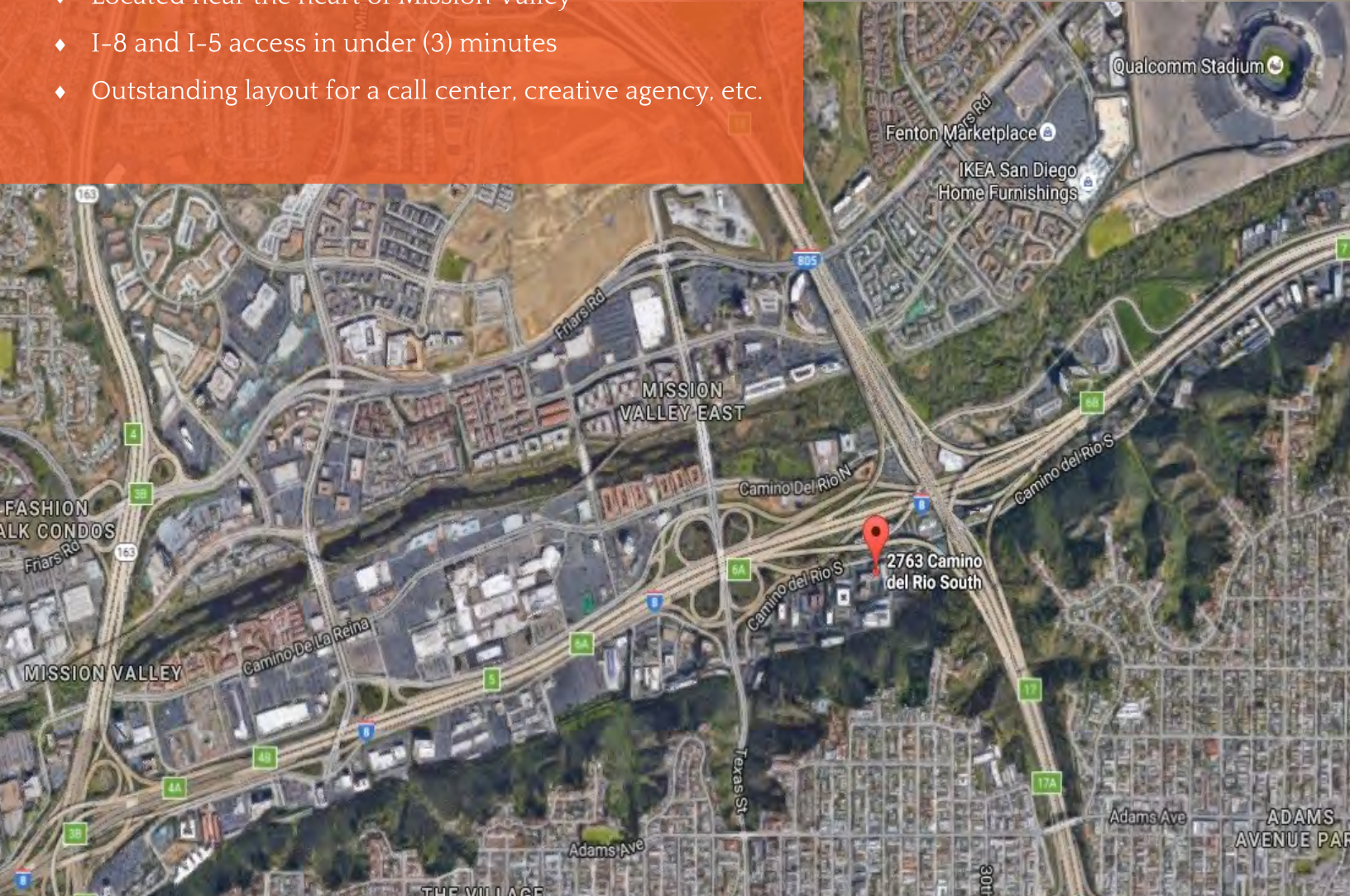


1495 Pacific Highway, Suite 450, San Diego, CA 92101 | (619) 243-8454 | [www.qfcre.com](http://www.qfcre.com)

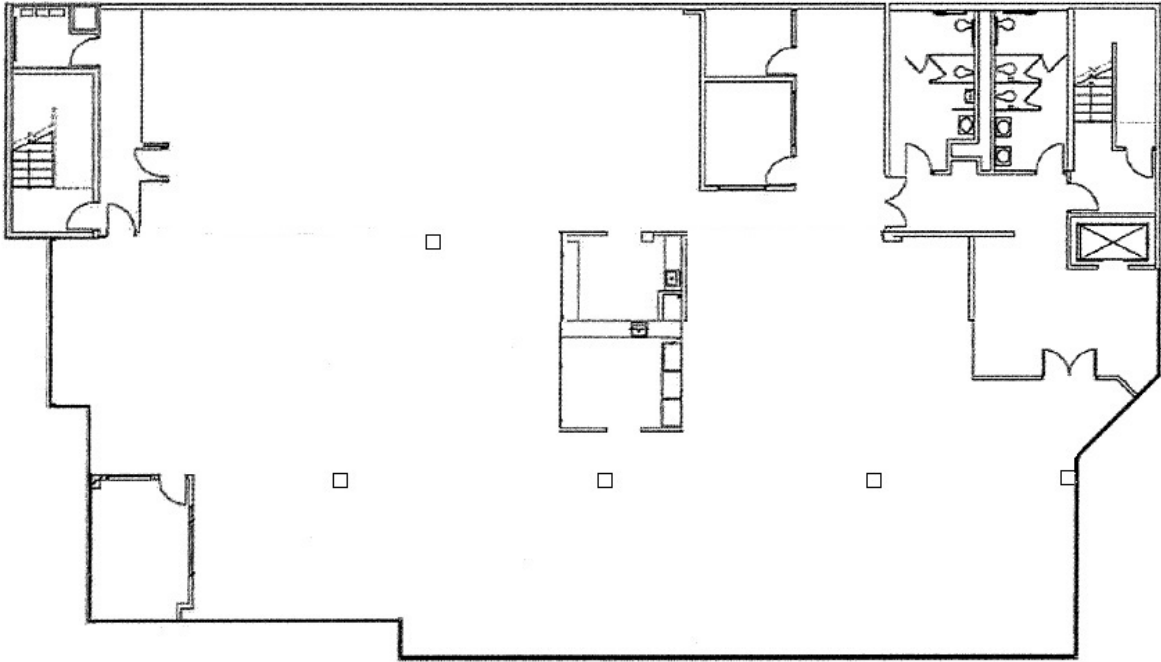
The information contained herein has been obtained from sources considered to be reliable, but no guarantee of its accuracy is made by this company. In addition, no representation is made respecting zoning, condition of title, dimensions, or any matters of a legal or environmental nature. Such matters should be referred to legal counsel for determination. Terms and conditions are subject to change without prior notice. Subject to errors and omissions.



- ◆ Professional office building with mirrored windows
- ◆ Front patio with seating areas
- ◆ Located near the heart of Mission Valley
- ◆ I-8 and I-5 access in under (3) minutes
- ◆ Outstanding layout for a call center, creative agency, etc.



# SUITE 200



- ◆ Entire second floor (±8,869 SF)
- ◆ Elevator served
- ◆ Abundance of natural light
- ◆ Open floor plan
- ◆ Secure reception area
- ◆ Large kitchen area

◆ Rate: \$1.95/SF + Electricity



Peter Wright  
Lic #01846272  
619-243-8450  
pwright@qfcre.com

Michael Wokuluk  
Lic #01972342  
619-243-8459  
mwokuluk@qfcre.com

1495 Pacific Highway, Suite 450, San Diego, CA 92101 | (619) 243-8454 | [www.qfcre.com](http://www.qfcre.com)

The information contained herein has been obtained from sources considered to be reliable, but no guarantee of its accuracy is made by this company. In addition, no representation is made respecting zoning, condition of title, dimensions, or any matters of a legal or environmental nature. Such matters should be referred to legal counsel for determination. Terms and conditions are subject to change without prior notice. Subject to errors and omissions.



Peter Wright  
Lic #01846272  
619-243-8450  
pwright@qfcre.com

Michael Wokuluk  
Lic #01972342  
619-243-8459  
mwokuluk@qfcre.com



1495 Pacific Highway, Suite 450, San Diego, CA 92101 | (619) 243-8454 | [www.qfcre.com](http://www.qfcre.com)

The information contained herein has been obtained from sources considered to be reliable, but no guarantee of its accuracy is made by this company. In addition, no representation is made respecting zoning, condition of title, dimensions, or any matters of a legal or environmental nature. Such matters should be referred to legal counsel for determination. Terms and conditions are subject to change without prior notice. Subject to errors and omissions.