

POINT LOMA OFFICES FOR LEASE

1050 ROSECRANS STREET | SAN DIEGO | CA | 92106



Michael Wokuluk

Lic #01972342

619-243-8459

mwokuluk@qfcre.com

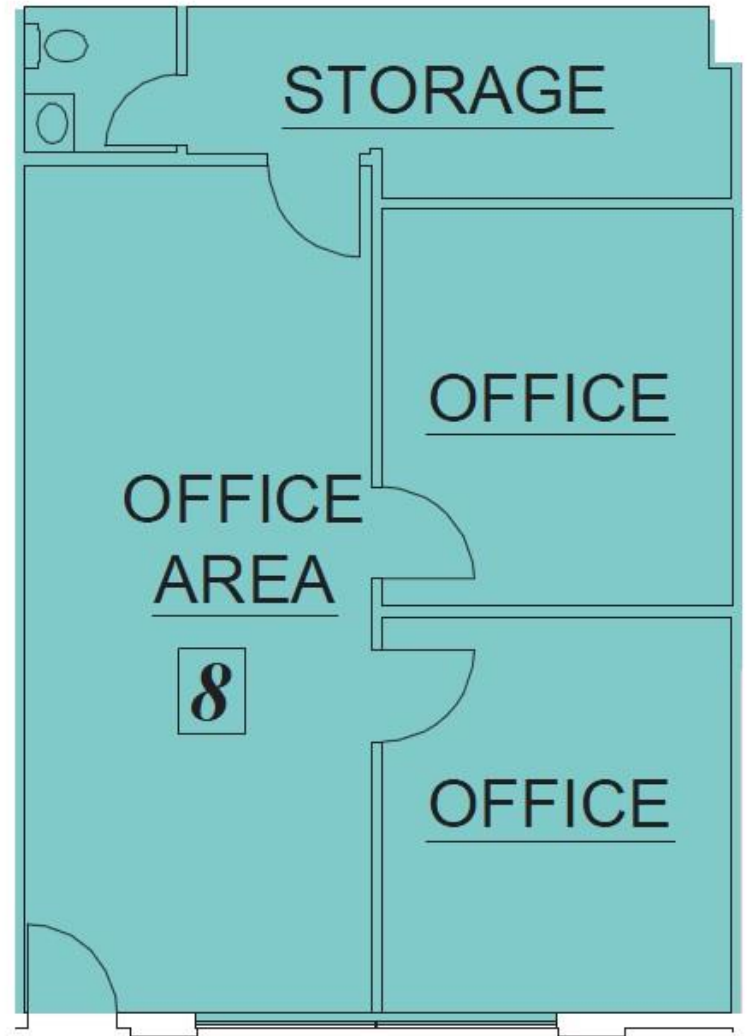
1495 Pacific Highway, Suite 450, San Diego, CA 92101 | (619) 243—8454 | www.qfcre.com

The information contained herein has been obtained from sources considered to be reliable, but no guarantee of its accuracy is made by this company. In addition, no representation is made respecting zoning, condition of title, dimensions, or any matters of a legal or environmental nature. Such matters should be referred to legal counsel for determination. Terms and conditions are subject to change without prior notice. Subject to errors and omissions.



1050 ROSECRANS STREET—SUITE 08

- ◆ Suite 08
- ◆ Size: ±806 SF
- ◆ Rate: \$1.85/SF + Utilities
- ◆ Two (2) offices, an open workspace, storage, and private restroom.
- ◆ One (1) reserved parking space available onsite. Ask Agent for details.
- ◆ Ground floor unit within the building courtyard.
- ◆ Nice layout for a small office.
- ◆ Available August 2018.



Michael Wokuluk

Lic #01972342

619-243-8459

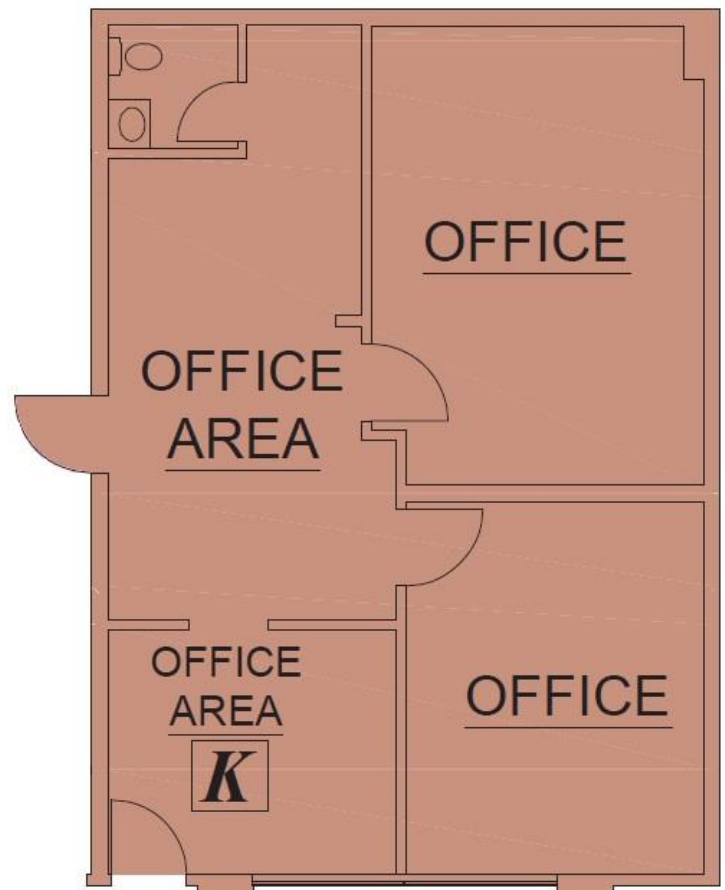
mwokuluk@qfcre.com

1495 Pacific Highway, Suite 450, San Diego, CA 92101 | (619) 243—8454 | www.qfcre.com

The information contained herein has been obtained from sources considered to be reliable, but no guarantee of its accuracy is made by this company. In addition, no representation is made respecting zoning, condition of title, dimensions, or any matters of a legal or environmental nature. Such matters should be referred to legal counsel for determination. Terms and conditions are subject to change without prior notice. Subject to errors and omissions.

1050 ROSECRANS STREET—SUITE K

- ◆ Suite K
- ◆ Size: ±885 SF
- ◆ Rate: \$1.75/SF + Electricity
- ◆ Two (2) offices, reception, one work area & one (1) restroom
- ◆ Available January 2019, call for additional details.



Michael Wokuluk

Lic #01972342

619-243-8459

mwokuluk@qfcre.com

1495 Pacific Highway, Suite 450, San Diego, CA 92101 | (619) 243—8454 | www.qfcre.com

The information contained herein has been obtained from sources considered to be reliable, but no guarantee of its accuracy is made by this company. In addition, no representation is made respecting zoning, condition of title, dimensions, or any matters of a legal or environmental nature. Such matters should be referred to legal counsel for determination. Terms and conditions are subject to change without prior notice. Subject to errors and omissions.



1050 ROSECRANS STREET

Michael Wokuluk

Lic #01972342

619-243-8459

mwokuluk@qfcre.com

1495 Pacific Highway, Suite 450, San Diego, CA 92101 | (619) 243—8454 | www.qfcre.com

The information contained herein has been obtained from sources considered to be reliable, but no guarantee of its accuracy is made by this company. In addition, no representation is made respecting zoning, condition of title, dimensions, or any matters of a legal or environmental nature. Such matters should be referred to legal counsel for determination. Terms and conditions are subject to change without prior notice. Subject to errors and omissions.

