



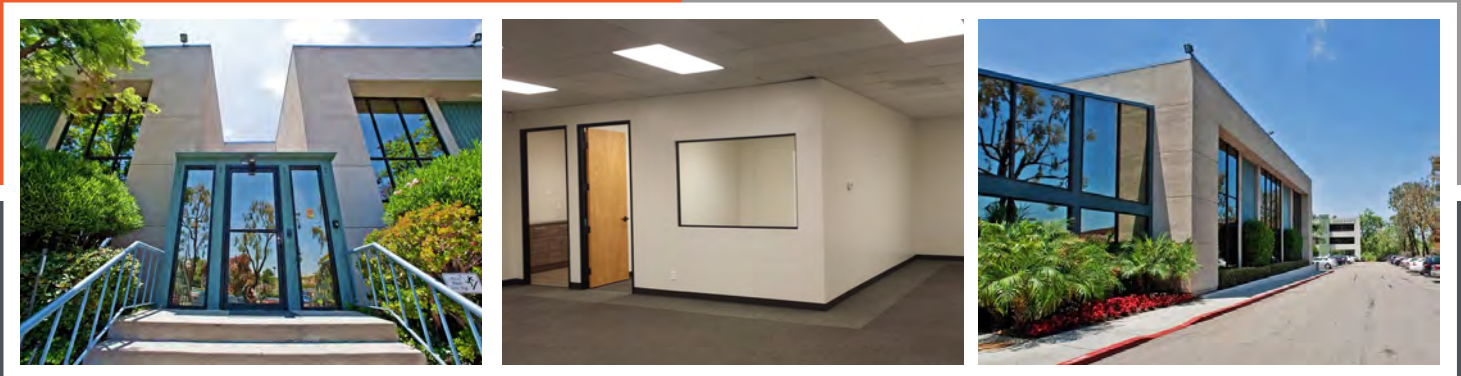
**FOR LEASE:**

**3636 CAMINO DEL RIO NORTH  
SAN DIEGO, CA 92108**

**AVAILABLE: 1,114 SF — 2,596 SF**

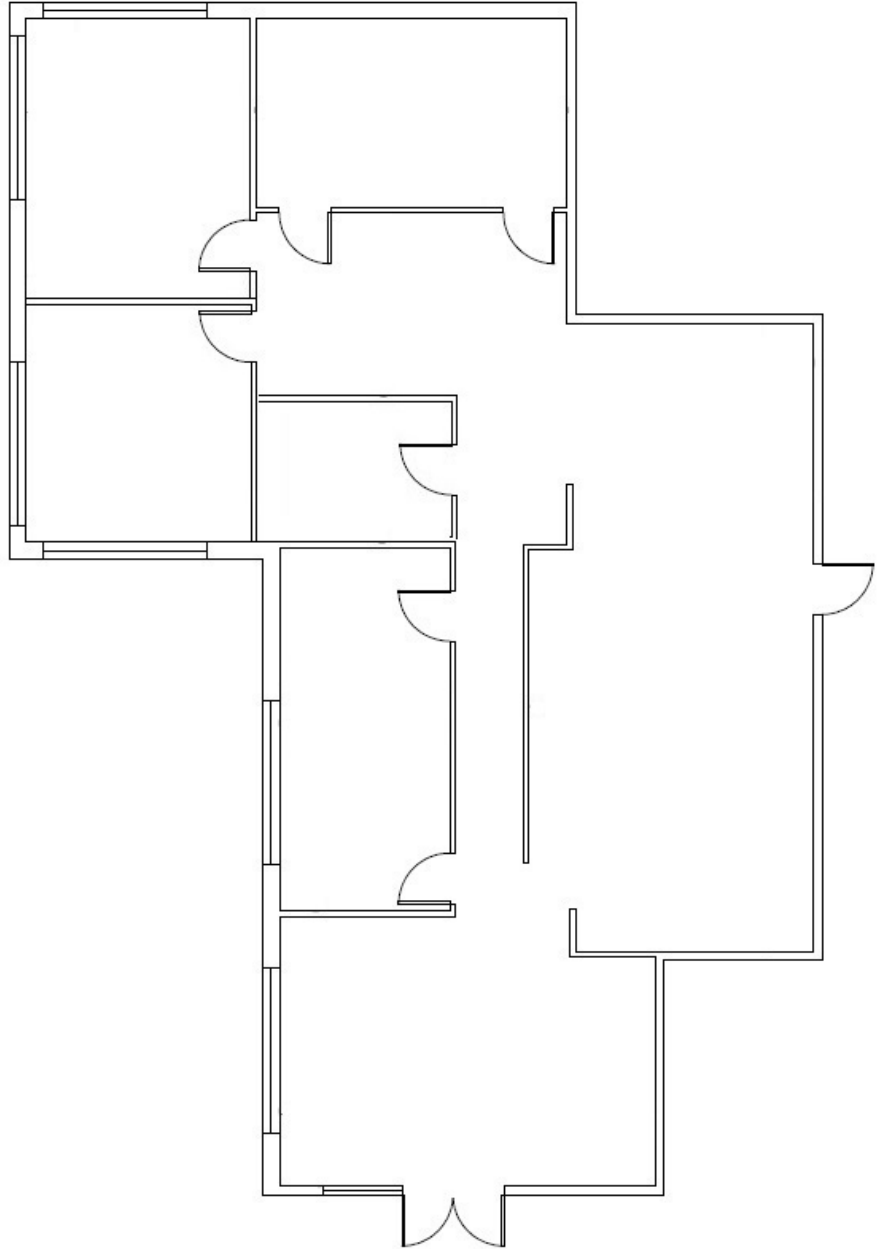
**PROPERTY OVERVIEW:**

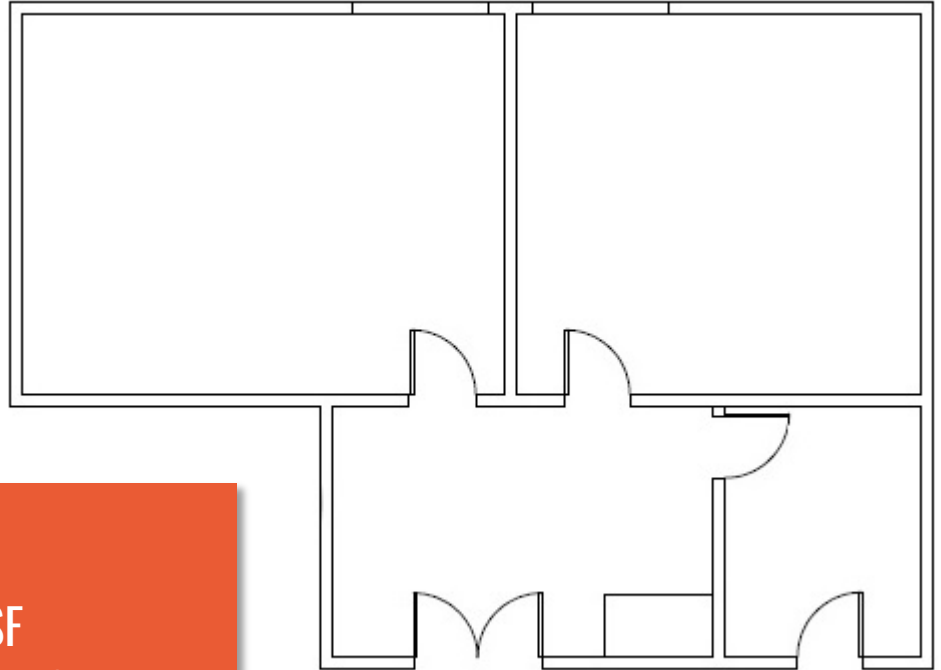
3636 CAMINO DEL RIO NORTH IS A 28,551 SF, TWO STORY PROFESSIONAL OFFICE BUILDING LOCATED IN CENTRAL MISSION VALLEY. THE PROPERTY FEATURES TWO ENTRANCES FOR EASY ACCESS THROUGHOUT. ALL SUITES INCLUDE UNRESERVED ONSITE PARKING AT A RATIO OF 2.9 PER 1,000 SF LEASED. ALSO INCLUDED IS VISITOR PARKING AND AN ELEVATOR ONSITE. CLIENTS AND EMPLOYEES WILL ENJOY BEING ONLY MINUTES FROM THE RESTAURANT AND RETAIL AMENITIES OF MISSION VALLEY. DON'T MISS OUT ON THE PROFESSIONAL OFFICE SPACES AVAILABLE AT 3636 CAMINO DEL RIO NORTH. CALL OUR AGENTS TODAY TO SET UP A TOUR.



**SUITE 100**  
**SIZE - 2,596 SF**  
**\$1.75/SF + ELECTRIC**

- FIRST FLOOR OFFICE WITH CONVENIENT ACCESS FROM THE MAIN LOBBY
- THREE (3) PRIVATE OFFICES, CONFERENCE ROOM, RECEPTION AREA, LARGE OPEN CREATIVE SPACE, A CONFERENCE ROOM



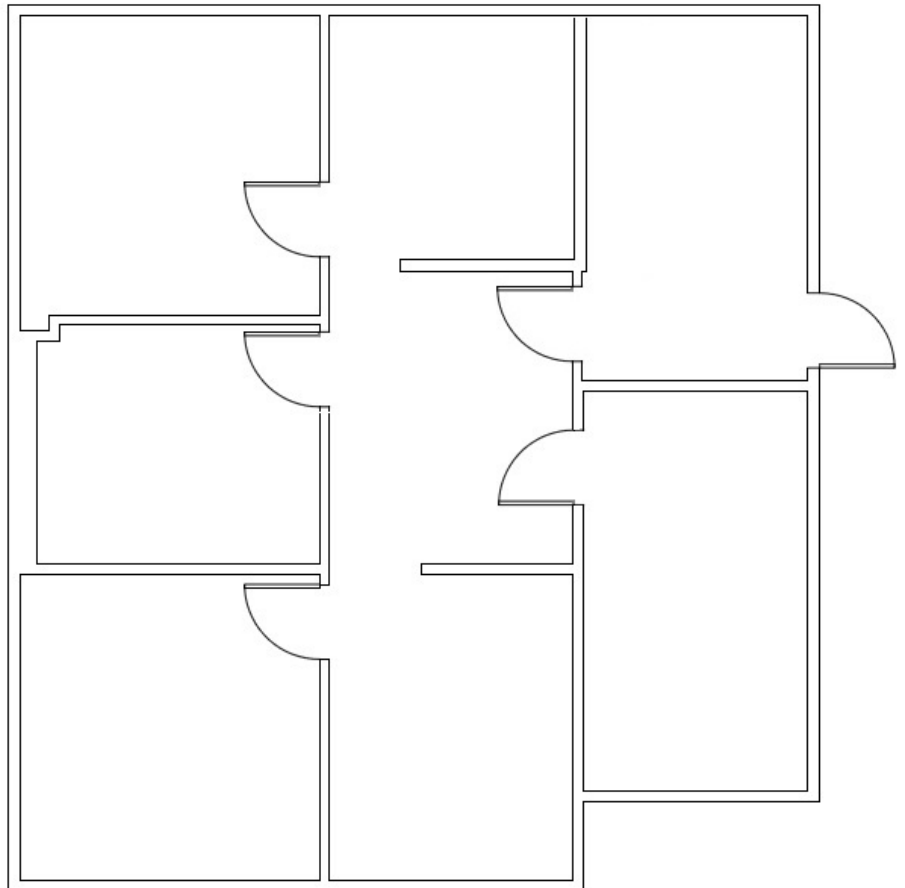


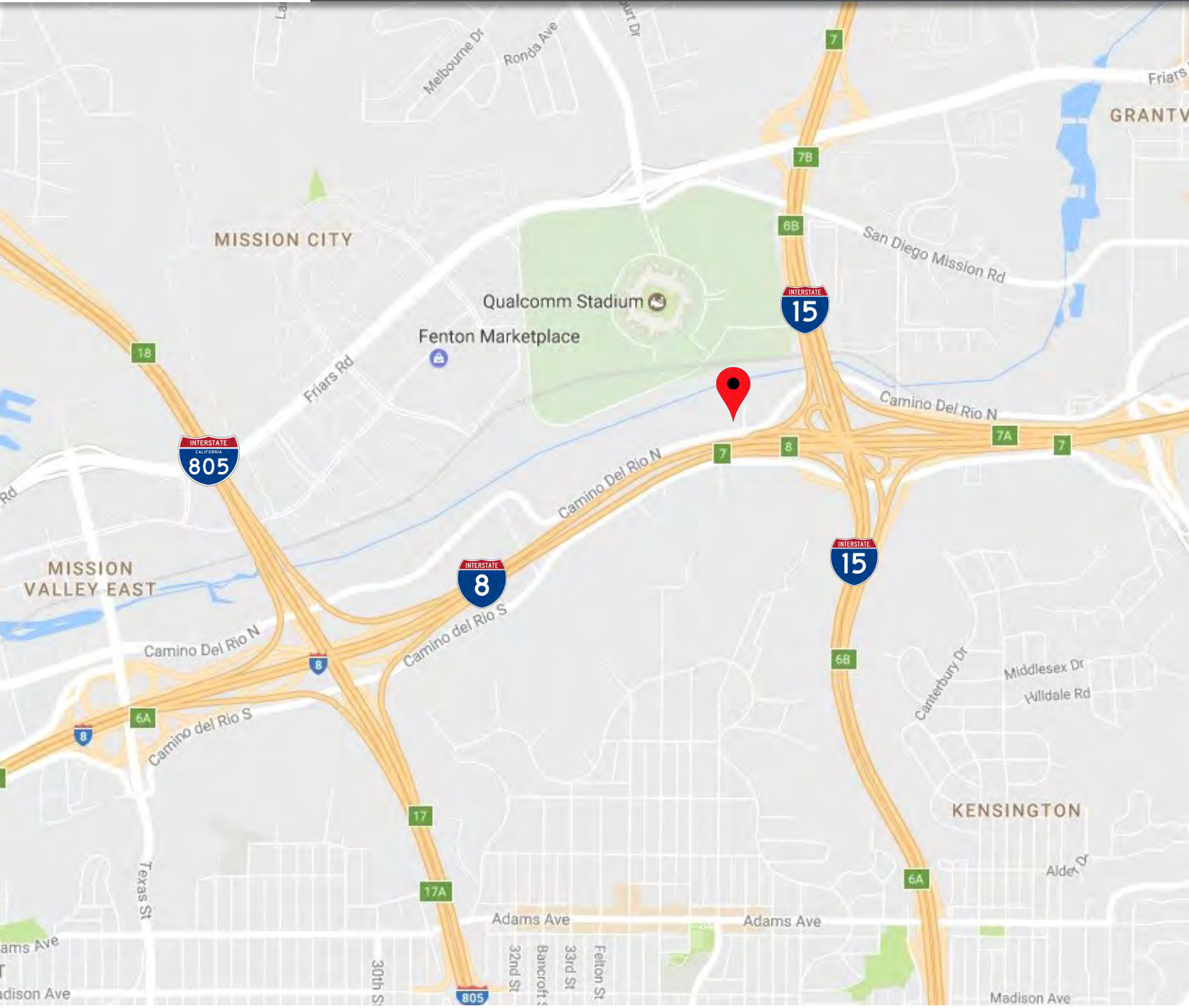
**SUITE 101**  
**SIZE - 1,114 SF**  
**\$1.75/SF + ELECTRIC**

- FIRST FLOOR OFFICE SUITE WITH TWO (2) OVERSIZED OFFICES, RECEPTION, ONE (1) PRIVATE OFFICE, AND CLOSET STORAGE SPACE
- AVAILABLE NOW, CALL FOR ADDITIONAL DETAILS

**SUITE 120**  
**SIZE - 1,221 SF**  
**\$1.75/SF + ELECTRIC**

- FIRST FLOOR OFFICE
- THREE (3) PRIVATE OFFICES WITH A RECEPTION AREA & CONFERENCE ROOM
- AVAILABLE FIRST QUARTER 2019







# LOCATION

3636 CAMINO DEL RIO NORTH  
SAN DIEGO, CA 92108



PETER WRIGHT

Lic. #01846272

619-243-8450

[pwright@qfcre.com](mailto:pwright@qfcre.com)

MICHAEL WOKULUK

Lic. #01972342

619-243-8459

[mwokuluk@qfcre.com](mailto:mwokuluk@qfcre.com)