

# CREATIVE OFFICE AVAILABLE FOR SUBLEASE – CABRILLO PLAZA

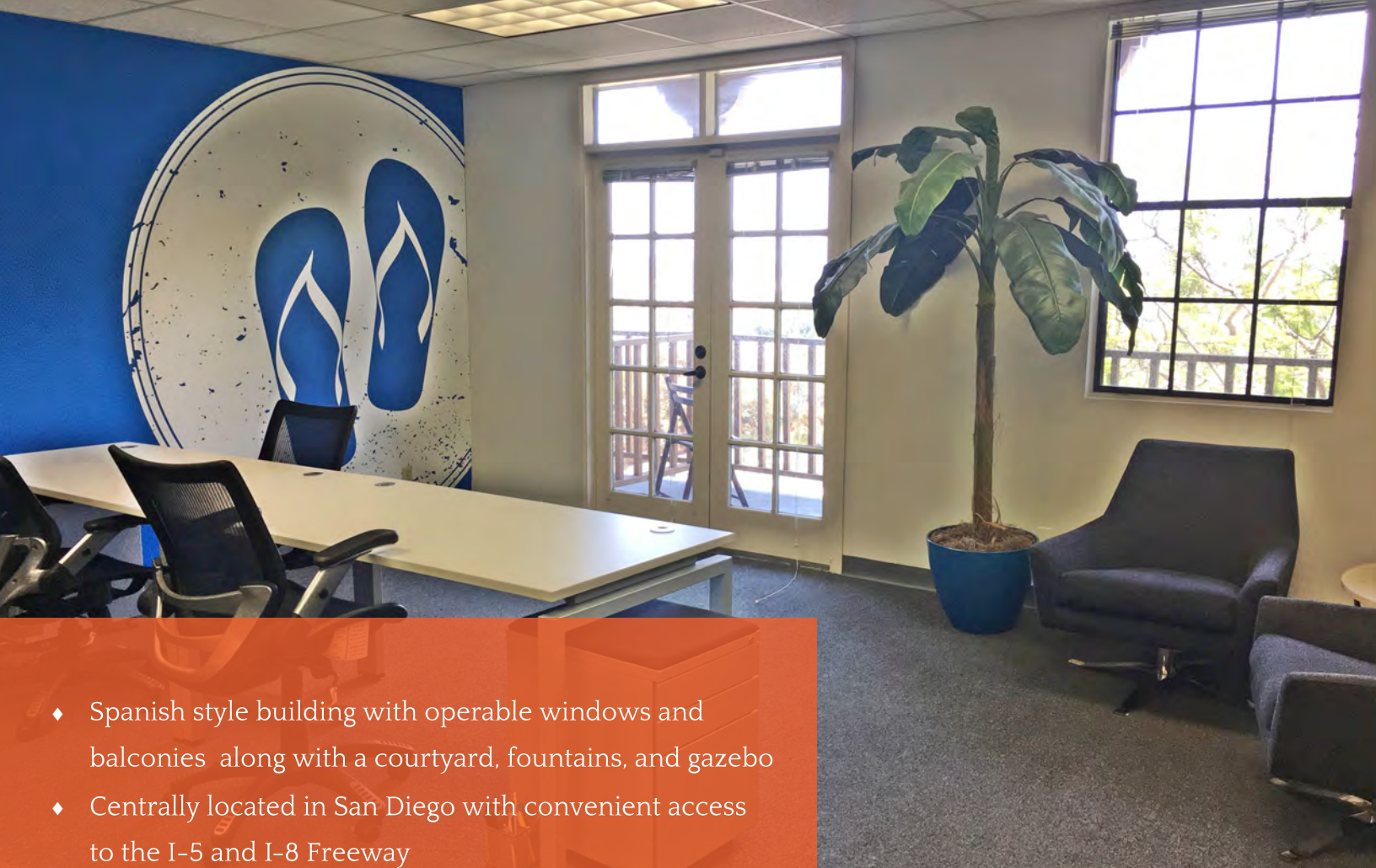
3990 OLD TOWN AVENUE | SUITE A-203 | SAN DIEGO | CA | 92110



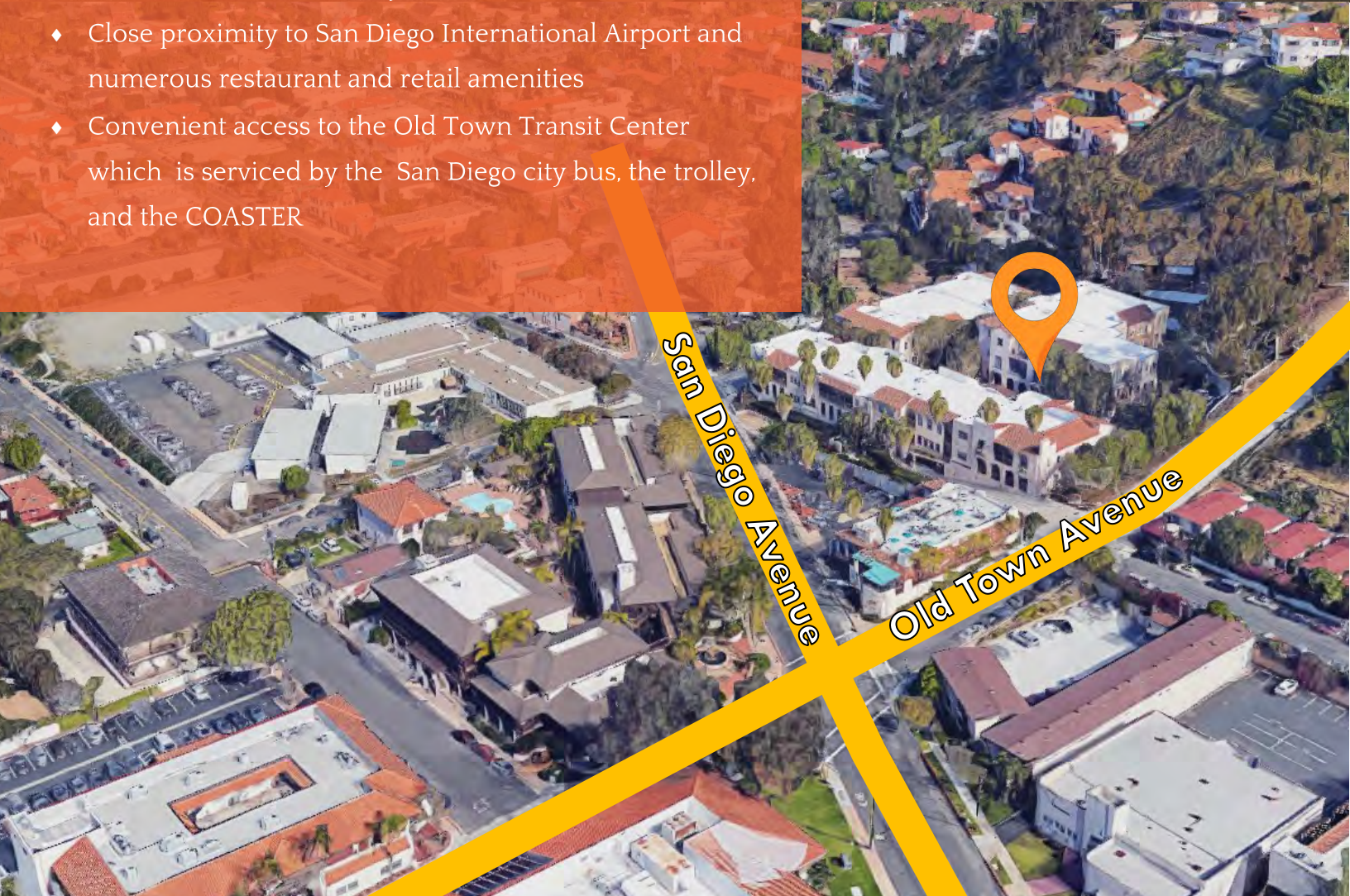
Steven Martini  
Lic #01330605  
619-243-8451  
smartini@qfcre.com

1495 Pacific Highway, Suite 450, San Diego, CA 92101 | (619) 243-8454  
[www.qfcre.com](http://www.qfcre.com)

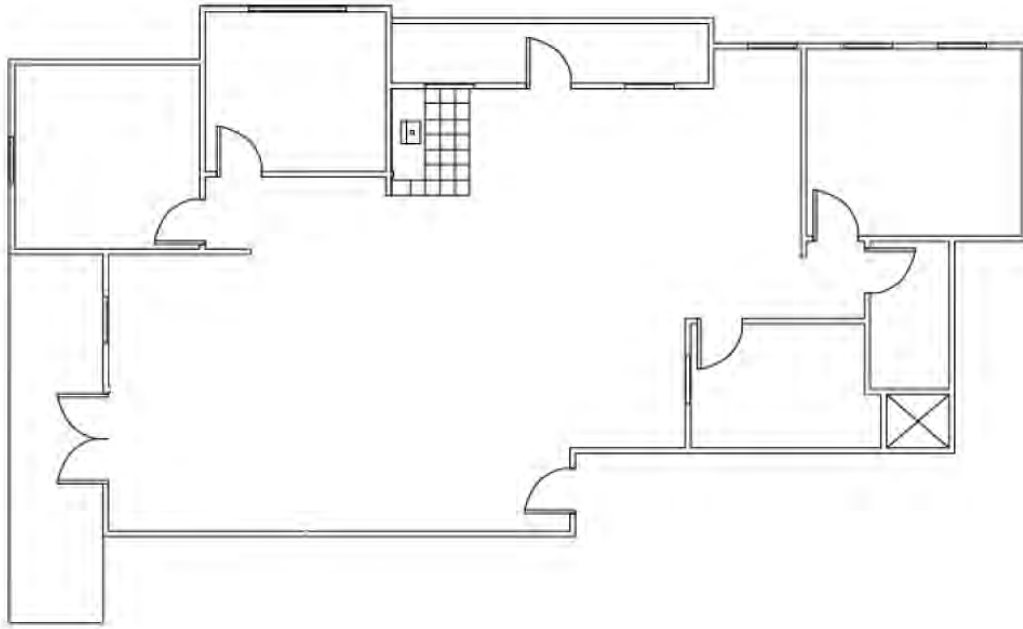
The information contained herein has been obtained from sources considered to be reliable, but no guarantee of its accuracy is made by this company. In addition, no representation is made respecting zoning, condition of title, dimensions, or any matters of a legal or environmental nature. Such matters should be referred to legal counsel for determination. Terms and conditions are subject to change without prior notice. Subject to errors and omissions.



- ◆ Spanish style building with operable windows and balconies along with a courtyard, fountains, and gazebo
- ◆ Centrally located in San Diego with convenient access to the I-5 and I-8 Freeway
- ◆ Close proximity to San Diego International Airport and numerous restaurant and retail amenities
- ◆ Convenient access to the Old Town Transit Center which is serviced by the San Diego city bus, the trolley, and the COASTER



# SUITE A-203



- ◆ Creative second floor office space (elevator served) with modern finishes
- ◆ ± 2,400 RSF
- ◆ Sublease available through November 30, 2019
- ◆ Four (4) private offices, storage room, open kitchen area
- ◆ Open work area that is currently configured with fourteen (14) work stations
- ◆ Two (2) balconies with western views

- ◆ Rate: \$2.15/SF + Electric



Steven Martini  
Lic #01330605  
619-243-8451  
smartini@qfcre.com

1495 Pacific Highway, Suite 450, San Diego, CA 92101 | (619) 243-8454  
[www.qfcre.com](http://www.qfcre.com)

The information contained herein has been obtained from sources considered to be reliable, but no guarantee of its accuracy is made by this company. In addition, no representation is made respecting zoning, condition of title, dimensions, or any matters of a legal or environmental nature. Such matters should be referred to legal counsel for determination. Terms and conditions are subject to change without prior notice. Subject to errors and omissions.



**Steven Martini**  
Lic #01330605  
619-243-8451  
smartini@qfcre.com

1495 Pacific Highway, Suite 450, San Diego, CA 92101 | (619) 243-8454  
[www.qfcre.com](http://www.qfcre.com)

The information contained herein has been obtained from sources considered to be reliable, but no guarantee of its accuracy is made by this company. In addition, no representation is made respecting zoning, condition of title, dimensions, or any matters of a legal or environmental nature. Such matters should be referred to legal counsel for determination. Terms and conditions are subject to change without prior notice. Subject to errors and omissions.