



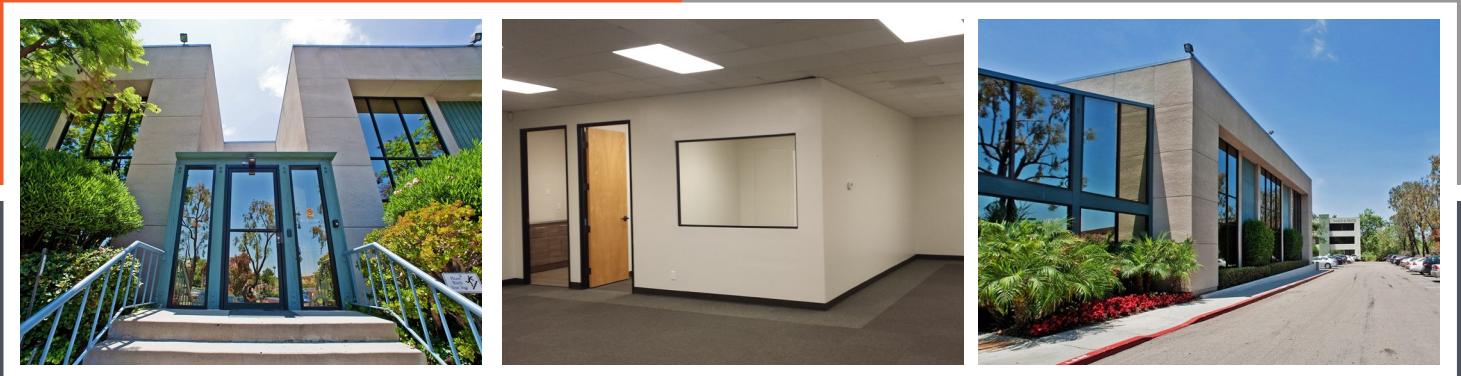
FOR LEASE:

**3636 CAMINO DEL RIO NORTH
SAN DIEGO, CA 92108**

**AVAILABLE: 631 SF - 3,765 SF
RATE: \$1.65/SF + ELECTRIC**

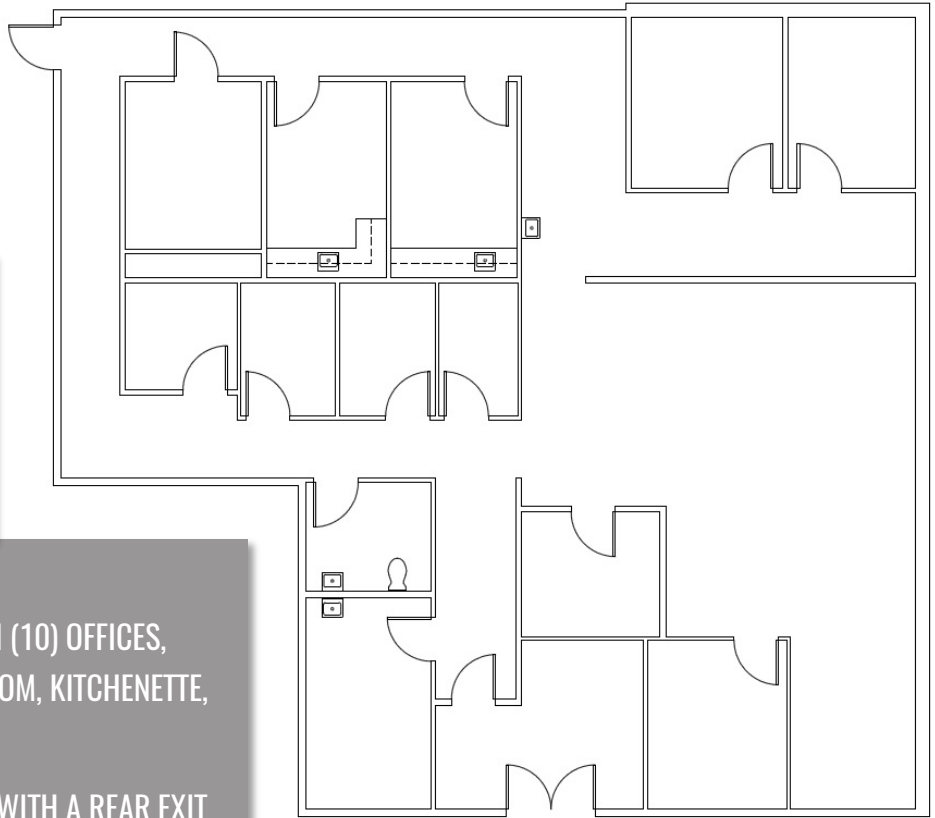
PROPERTY OVERVIEW:

3636 CAMINO DEL RIO NORTH IS A 28,551 SF, TWO STORY PROFESSIONAL OFFICE BUILDING LOCATED IN CENTRAL MISSION VALLEY. THE PROPERTY FEATURES TWO ENTRANCES FOR EASY ACCESS THROUGHOUT. ALL SUITES INCLUDE UNRESERVED ONSITE PARKING AT A RATIO OF 2.9 PER 1,000 SF LEASED. ALSO INCLUDED IS VISITOR PARKING AND AN ELEVATOR ONSITE. CLIENTS AND EMPLOYEES WILL ENJOY BEING ONLY MINUTES FROM THE RESTAURANT AND RETAIL AMENITIES OF MISSION VALLEY. DON'T MISS OUT ON THE PROFESSIONAL OFFICE SPACES AVAILABLE AT 3636 CAMINO DEL RIO NORTH. CALL OUR AGENTS TODAY TO SET UP A TOUR.



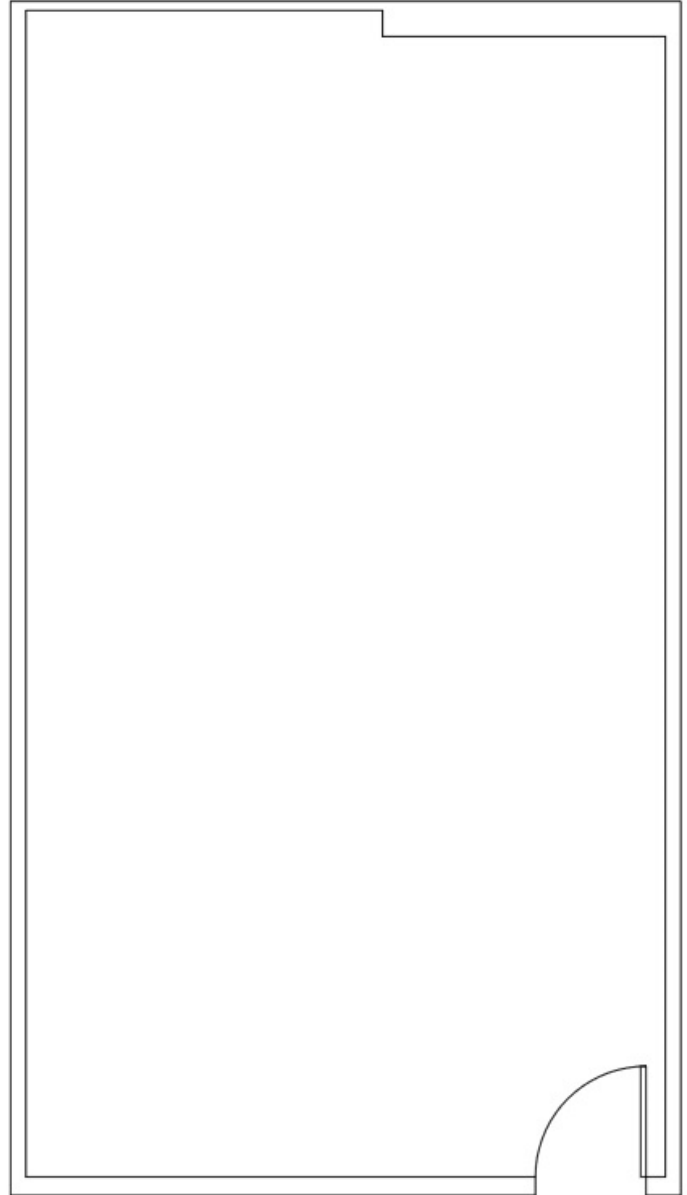
SUITE 110
SIZE - 3,134 SF
\$1.65/SF + ELECTRIC

- FIRST FLOOR SUITE FEATURING TEN (10) OFFICES, RECEPTION, BREAK ROOM, RESTROOM, KITCHENETTE, AND OPEN BULLPEN
- NICE GLASS DOUBLE DOOR ENTRY WITH A REAR EXIT
- EASY ACCESS WITH ENTRY FROM THE MAIN LOBBY
- CAN BE COMBINED WITH SUITE 130 FOR 3,765 SF
- AVAILABLE SEPTEMBER 2017



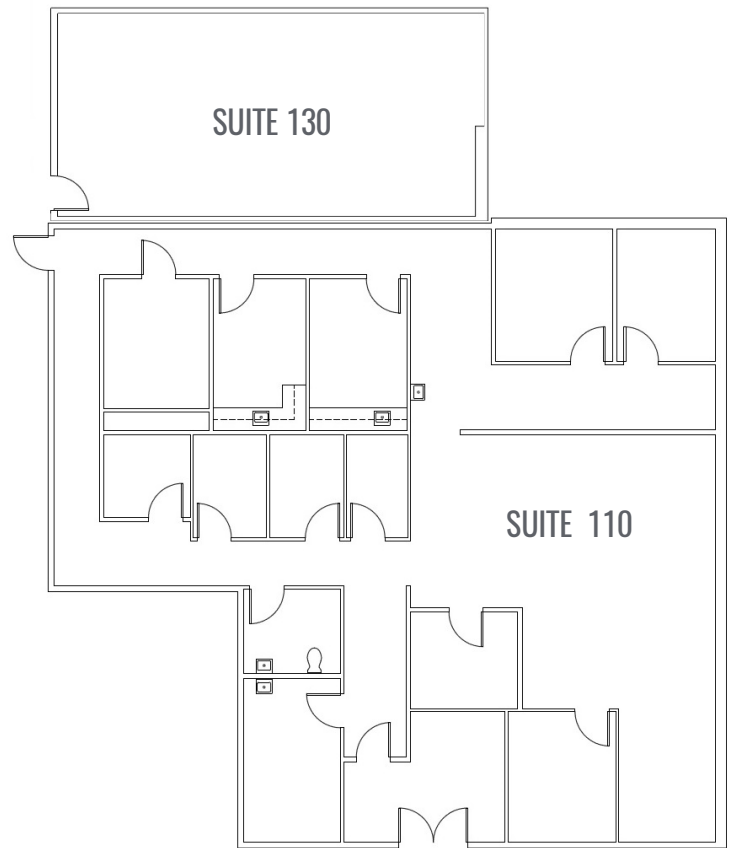
SUITE 130
SIZE - 631 SF
\$1.65/SF + ELECTRIC

- FIRST FLOOR OPEN OFFICE
- CAN BE COMBINED WITH SUITE 110 FOR 3,765 SF
- AVAILABLE SEPTEMBER 2017



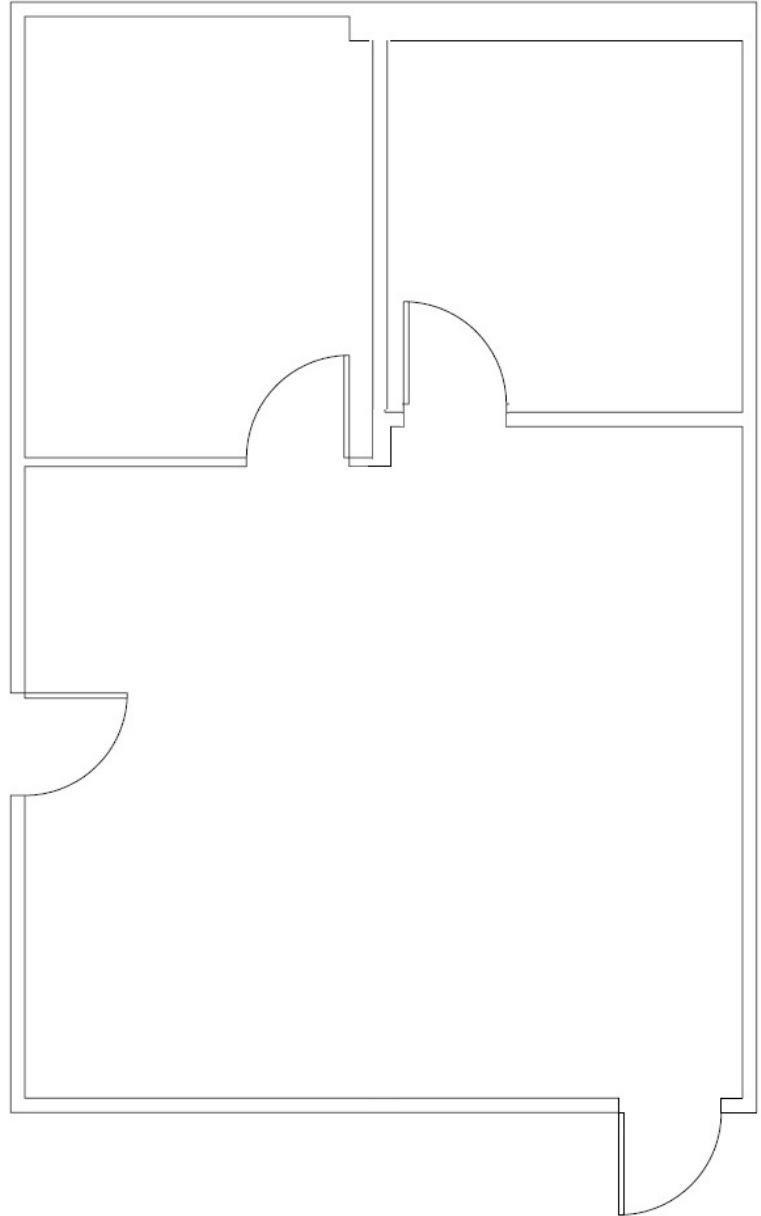
**SUITE 110 & 130
SIZE - 3,765 SF
\$1.65/SF + ELECTRIC**

- FIRST FLOOR SUITE FEATURING TEN (10) OFFICES, RECEPTION, BREAK ROOM, RESTROOM, KITCHEN-ETTE, AND OPEN BULLPEN
- GLASS DOUBLE DOOR ENTRY WITH A REAR EXIT
- EASY ACCESS WITH ENTRY FROM THE MAIN LOBBY
- AVAILABLE SEPTEMBER 2017



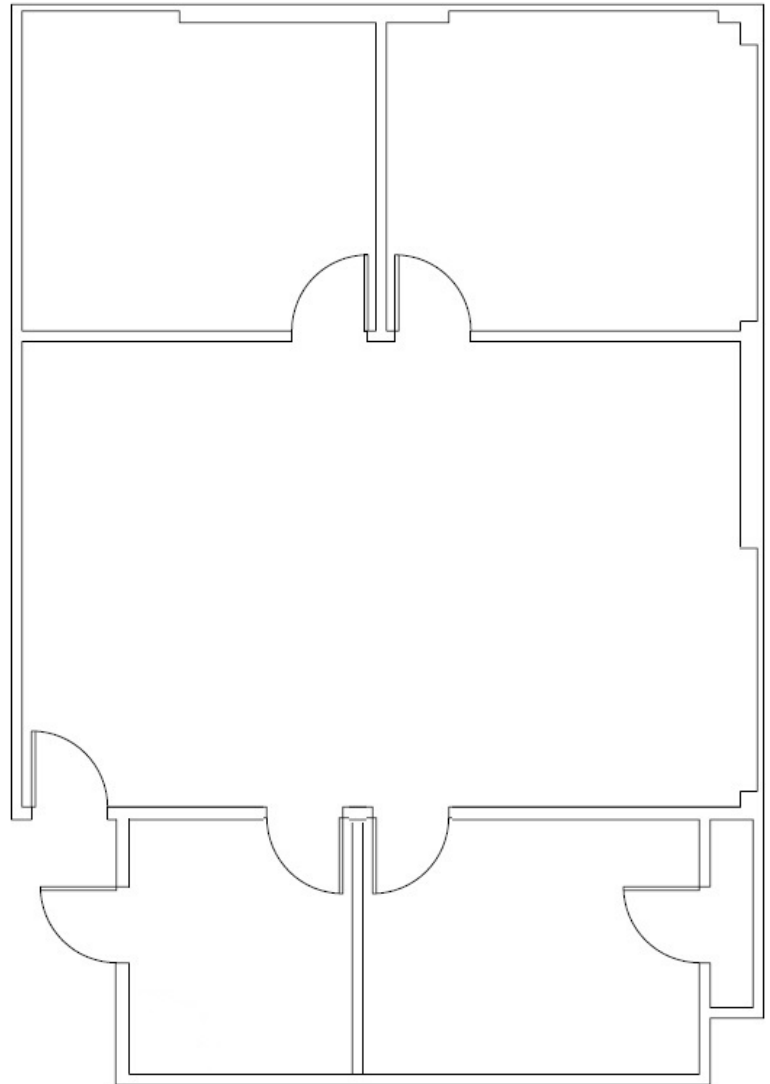
SUITE 150
SIZE - 795 SF
\$1.65/SF + ELECTRIC

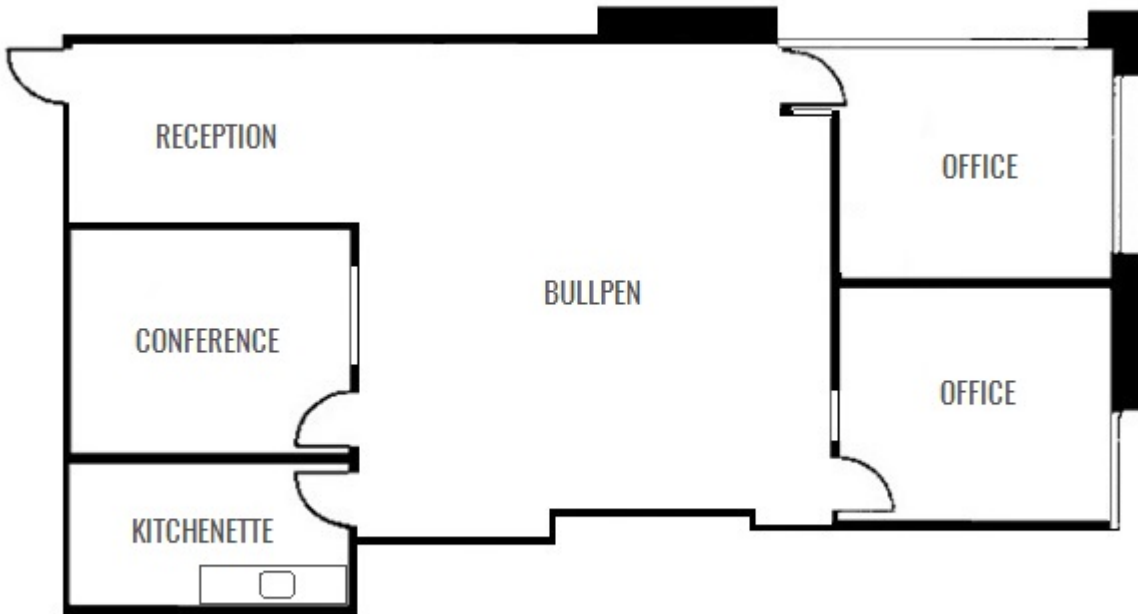
- FIRST FLOOR SUITE WITH TWO (2) OFFICES AND AN OPEN RECEPTION/WORK SPACE
- NICELY APPOINTED SUITE WITH EXTERIOR WINDOWS AND AN OPEN LAYOUT
- CONVENIENT ACCESS FROM THE SECONDARY BUILDING ENTRANCE
- AVAILABLE AUGUST 2017



SUITE 185
SIZE - 1,331 SF
\$1.65/SF + ELECTRIC

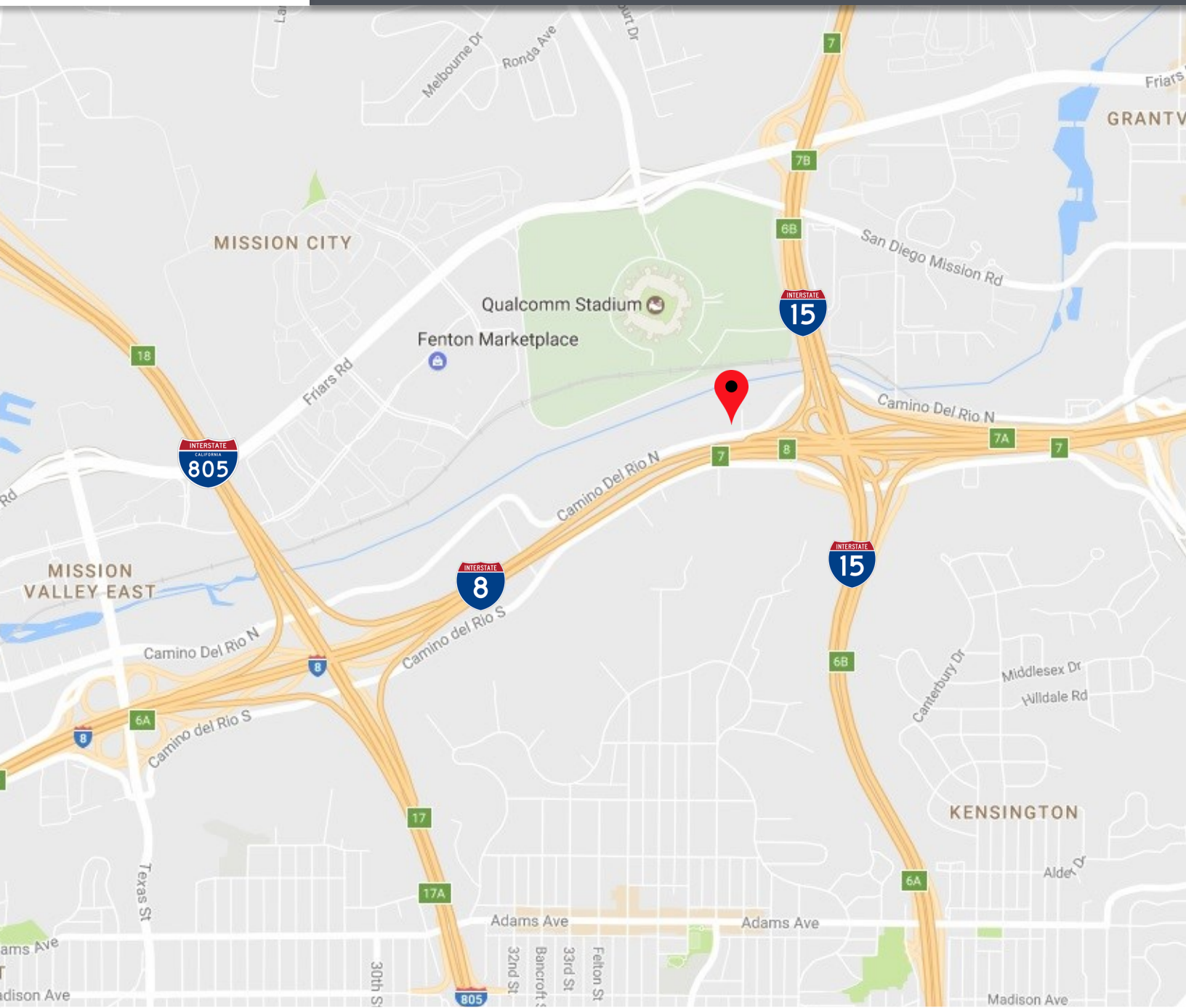
- FIRST FLOOR SUITE WITH THREE (3) OFFICES, AN OPEN WORK SPACE, AND STORAGE
- CORNER OFFICE WITH FLOOR TO CEILING CLASS WINDOWS
- NEW CARPET AND PAINT PROVIDED
- CONVENIENT ACCESS FROM THE SECONDARY BUILDING ENTRANCE
- AVAILABLE NOW





SUITE 240
SIZE - 2,032 SF
\$1.65/SF + ELECTRIC

- FEATURING TWO (2) WINDOW LINED OFFICES, AN OPEN CENTRAL WORK SPACE, NEW KITCHENETTE, CONFERENCE ROOM, AND RECEPTION
- CUSTOMIZED SUITE WITH NEW FLOORING, PAINT, AND KITCHENETTE
- TALL 8' CEILINGS THROUGHOUT
- LARGE OFFICES WITH GREAT NATURAL LIGHT AND IMPRESSIVE VIEWS
- AVAILABLE NOW





LOCATION

3636 CAMINO DEL RIO NORTH
SAN DIEGO, CA 92108



PETER WRIGHT

Lic. #01846272

619-243-8450

pwright@qfcre.com

MICHAEL WOKULUK

Lic. #01972342

619-243-8459

mwokuluk@qfcre.com