

BANKERS HILL OFFICE SPACE FOR LEASE - 3636 4th Avenue | San Diego | CA | 92103



Peter Wright

LIC. # 01846272

619 . 243 . 8450

pwright@qfcre.com

Michael Wokuluk

LIC. # 01972342

619 . 243 . 8459

mwokuluk@qfcre.com

1495 Pacific Highway | Suite 450 | San Diego | CA | 92101

619.243 . 8454 | www.qfcre.com

The information contained herein has been obtained from sources considered to be reliable, but no guarantee of its accuracy is made by this company. In addition, no representation is made respecting zoning, condition of title, dimensions, or any matters of a legal or environmental nature. Such matters should be referred to legal counsel for determination. Terms and conditions are subject to change without prior notice. Subject to errors and omissions.

PROFESSIONAL
BUILDING

3636 4th AVENUE

- ❖ Excellent Bankers Hill Location
- ❖ Walking Distance to Many, Local Shops / Restaurants / Entertainment
- ❖ Covered, Onsite Parking Available



Peter Wright

LIC. # 01846272

619 . 243 . 8450

Michael Wokuluk

LIC. #01972342

619 . 243 . 8459

1495 Pacific Highway | Suite 450 | San Diego | CA | 92101

619.243.8454 | www.qfcre.com

The information contained herein has been obtained from sources considered to be reliable, but no guarantee of its accuracy is made by this company. In addition, no representation is made respecting zoning, condition of title, dimensions, or any matters of a legal nature.

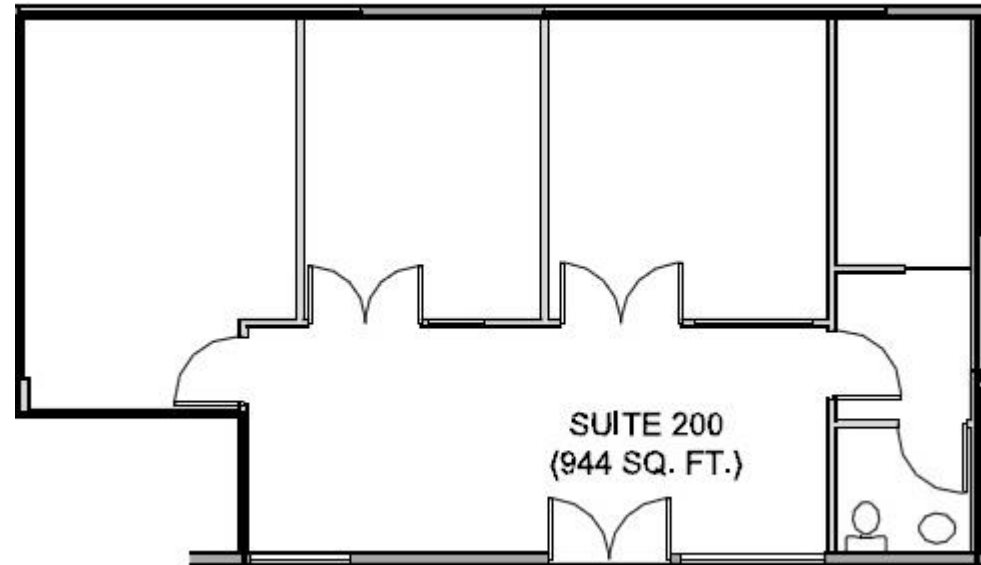
FLOOR PLAN & LEASING INFORMATION

3636 4th AVENUE - SUITE 200

❖ SUITE 200

- +/- 944 Square Feet
- Three (3) private offices
- Storage space
- Reception area
- Private restroom
- Available January 2019

❖ Asking | \$2.05/sf Plus Electric



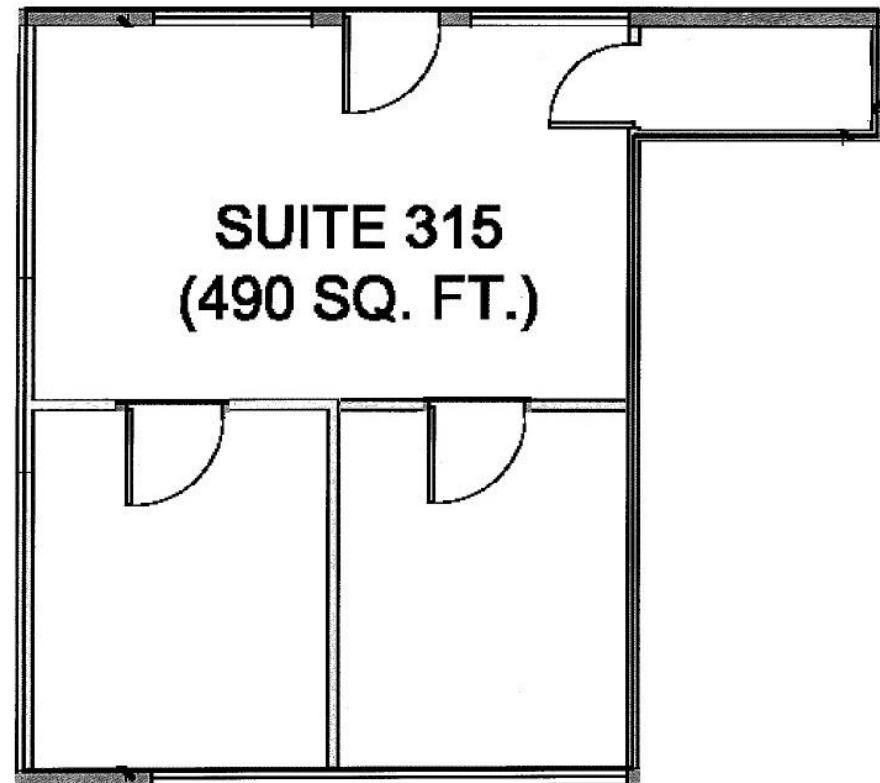
FLOOR PLAN & LEASING INFORMATION

3636 4th AVENUE - SUITE 315

❖ SUITE 315

- +/- 490 Square Feet
- One (1) office
- Storage closet
- Reception area
- Available February 2019

❖ Asking | \$2.05/sf Plus Electric



3636
**PROFESSIONAL
BUILDING**

QFC
REAL ESTATE

Peter Wright

LIC. # 01846272

619 . 243 . 8450

pwright@qfcre.com

Michael Wokuluk

LIC. # 01972342

619 . 243 . 8459

mwokuluk@qfcre.com

1495 Pacific Highway | Suite 450 | San Diego | CA | 92101
619 . 243 . 8454 | www.qfcre.com

The information contained herein has been obtained from sources considered to be reliable, but no guarantee of its accuracy is made by this company. In addition, no representation is made respecting zoning, condition of title, dimensions, or any matters of a legal or environmental nature. Such matters should be referred to legal counsel for determination. Terms and conditions are subject to change without prior notice. Subject to errors and omissions.